



# HUNTERDON PARKS HARBINGER



Park program information from February through August 2018

**Check our website for more detailed information!**

*Like us on facebook at Hunterdon County Parks*

Future program releases: June 1, September 1

## MAPLE SUGARING LIVING HISTORY

### PUBLIC OPEN HOUSE

Saturday, March 3, 9:00 AM to 2:00 PM

Raindate: Sunday, March 4 (check our website or call (908) 782-1158 for cancellation information)

Tours begin every 20 minutes and last about 1 hour.

**Pre-registration is not required.**

### SCHOOL FIELD TRIPS & OTHER GROUPS

Wednesday to Friday, February 28 to March 2, 9:00 AM to 5:00 PM

Tours scheduled every 30 minutes and last about 1 hour.

**Pre-registration required; call (908) 782-1158.**

Echo Hill, all ages, \$1 per person suggested donation

Experience first-hand the North American tradition of maple sugaring at Hunterdon County's Maple Sugaring Program. You'll take a trip through time to experience the art of the sugaring process. Along the way you will enjoy a Native American story about the discovery of maple sap, see an early American Frontiersman taping his trees, and visit a sugar "farmer" at his evaporator. At the end of the walk, everyone will get a free taste of real maple syrup on a silver dollar pancake.

### Also available: MAPLE SUGAR TO GO:

Let us bring Maple Sugaring to your location!

1 hr, \$50 in-County, \$75 out-of-County (limited range).

Call the office to schedule a program.

**MAPLE SAP COLLECTION:** On weekdays throughout February, we will schedule groups to visit our Sugar Bush to discuss how we tap the trees and to collect the sap. Call us to schedule your group. Echo Hill, 1 hour, 6-25 people, ages 5 to adult (kids with adult help), \$30 for the group. Family program page 12.

## 18th ANNUAL EARTH DAY CELEBRATION

Saturday, April 21, 2:30 PM to 8:00 PM, Echo Hill Park, all ages, free! Pre-registration is not required. Help us celebrate the one, the only, Planet Earth! This year, we are moving to an afternoon/evening festival celebrating New Jersey native wildlife. At 3:00, enjoy an "April pole" song and dance to thank the Earth for what it has provided. Learn about wildlife movement and habitat connectivity at our film screening at 5:00. Local producer Jared Flesher will show us two episodes of *The Creature Show*, focused on the state of bobcats and salamanders in New Jersey, and he will then lead us in a discussion on habitat connectivity. Take a hike around the park with our affiliate, the Hunterdon Hiking Club. Many of the traditional Earth Day activities will be back, including 4-H clubs. Enjoy a variety of crafts and recycled building challenges for all ages. We will also be hosting a Pond Paddle on the Echo Hill Pond with our affiliate, the Hunterdon County Canoe Club. Free tickets are required for a timeslot and are available that day on a first come/first served basis. The evening will conclude with a campfire and s'mores at 7:00!

### Table of Contents:

**Page 2-3:** Summer Camps: Summer Nature Program • **Page 4:** Summer Camps: Fine Arts & Sports • **Page 5:** Summer Camps: Science & LEGO • **Page 6-8:** Van & Bus Trips • **Page 9:** History, Gardening, & New Parks Director • **Page 10:** Backpacking & Camping • **Page 11:** Canoeing • **Page 12:** Recreation Programs • **Page 13:** Basketry, Crafts, & Photography • **Page 14 & 15:** Art Classes • **Page 16-18:** Nature Programs • **Page 19:** Birding • **Page 20:** Volunteering • **Page 21:** Summer Employment • **Page 22:** Group Requestable Programs

*DISCLAIMER: The attached information is being distributed by the Clinton Township School District at the request of the organization. The District's distribution of this literature is purely a courtesy to our parents and students and is not an endorsement by the District.*



## HUNTERDON COUNTY DIVISION OF PARKS & RECREATION

DEPARTMENT OF PLANNING, ECONOMIC DEVELOPMENT AND LAND USE

Mailing Address: P.O. Box 2900, Flemington, NJ 08822-2900

Office Location: 1020 State Highway 31, Lebanon, NJ

Telephone (908) 782-1158 • Fax (908) 806-4057

Email: [parks@co.hunterdon.nj.us](mailto:parks@co.hunterdon.nj.us) • [www.co.hunterdon.nj.us](http://www.co.hunterdon.nj.us) (click on "Parks & Recreation")



## SUMMER NATURE PROGRAM

**SUMMER NATURE PROGRAM** is an opportunity for kids entering kindergarten through grade 10 to connect with and explore the natural world. Program leaders facilitate hands-on activities that foster kids' innate curiosity about nature and wildlife. Campers and parents alike rave about nature camp, making it one of the Parks Division's most popular offerings. Leaders for the Summer Nature Program are instructed in guiding children in the outdoors and are certified in First Aid and CPR. Group size is a maximum of 10-12 campers depending on session and location, with each leader being aided by an assistant or volunteer counselor-in-training (CIT). Special canoeing instructors host the paddling clinics and canoe trips with our older campers. Sessions are available at both Echo Hill Park and Teetertown Nature Preserve. Echo Hill is located at 42 Lilac Drive in Clinton Township, less than 15 minutes from both Clinton and Flemington. Teetertown is located at 30 Pleasant Grove Road in Lebanon Township, about 15 minutes north of Clinton, or 15 minutes northwest of Whitehouse Station. Both parks offer diverse habitats to explore, including stream, pond, field, and forest areas.

Note that camp is held Monday through Friday—no weekends. Camp **will not be held** on Wednesday, July 4th, Independence Day. These sessions are pro-rated.



*Check out the videos of each session to learn more!  
View at: <http://www.co.hunterdon.nj.us/depts/parks/Camps.html>.*

### NATURE BUGS

Children entering kindergarten, Echo Hill or Teetertown, 9:00 AM to 11:30 AM, \$105, one-week sessions.

**A.** July 23 to 27

**B.** August 6 to 10

The Nature Bugs program is the perfect half-day adventure for your young nature enthusiast. Our Park Naturalists teach about local plants and animals through hikes, observations, crafts, and games. A safe and fun way to foster your child's interest in the natural environment.



### NATURE DISCOVERY

Children entering grades 1 & 2, Echo Hill or Teetertown, 9:00 AM to 3:30 PM, \$170, one-week sessions.

**A.** June 25 to June 29

**E.** July 23 to July 27

**B.** July 2 to July 6 (\$150)

**F.** July 30 to August 3

**C.** July 9 to July 13

**G.** August 6 to August 10

**D.** July 16 to July 20

**H.** August 13 to August 17

This full-day program allows campers to explore all the wonders that the parks have to offer. From searching for wildlife to toasting s'mores, Nature Discovery campers enjoy a great introduction to the world outdoors.

### PIONEERS

Children entering grades 3 & 4, Echo Hill or Teetertown, 9:00 AM to 3:30 PM, \$170, one-week sessions.

**A.** June 25 to June 29

**E.** July 23 to July 27

**B.** July 2 to July 6 (\$150)

**F.** July 30 to August 3

**C.** July 9 to July 13

**G.** August 6 to August 10

**D.** July 16 to July 20

**H.** August 13 to August 17

Pioneers enjoy activities that foster understanding of habitats, adaptations, and other ecological concepts. Favorite activities such as shelter-building help Pioneers develop their outdoor skills.



## SUMMER NATURE PROGRAM (continued)

### JUNIOR EXPLORERS

Children entering grades 5 & 6, Echo Hill or Teetertown, 9:00 AM to 3:30 PM, late pick up on trip days, campout on second Thursday night, \$325, two-week sessions.

**A1.** June 25 to July 6 (\$305)

**A2.** June 25 to July 6 (\$305, Echo Hill only)

**B1.** July 9 to July 20

**B2.** July 9 to July 20 (Echo Hill only)

**C1 & C2.** July 23 to August 3

**D1 & D2.** August 6 to August 17

Please note that "1" and "2" reflects that there are two counselor groups (total of 20 campers) scheduled for each session of Junior Explorers *except* for Teetertown Sessions A and B, which will only host only one group.

These two-week sessions give campers the chance to increase their understanding of nature as well as their outdoor "know-how." Juniors learn basic canoeing skills on the park ponds before embarking on a day trip on a local river. A field trip allows Juniors to discover nature beyond the County Parks. The Junior Explorer experience culminates with a campout full of fun night-time activities.



### SENIOR EXPLORERS

Children entering grades 7 & 8, Echo Hill or Teetertown, 9:00 AM to 3:30 PM, late pick up on trip days, campout on second Thursday night, \$325, two-week sessions.

**A.** June 25 to July 6 (\$305)      **C.** July 23 to August 3

**B.** July 9 to July 20      **D.** August 6 to August 17

Senior Explorers continue to expand environmental understanding and hone their outdoor skills. Team-building activities, paddling clinics, river canoeing, and a field trip are all important components. Seniors also enjoy a campout night that includes pitching tents, cooking over a campfire, and exploring nature after dark.

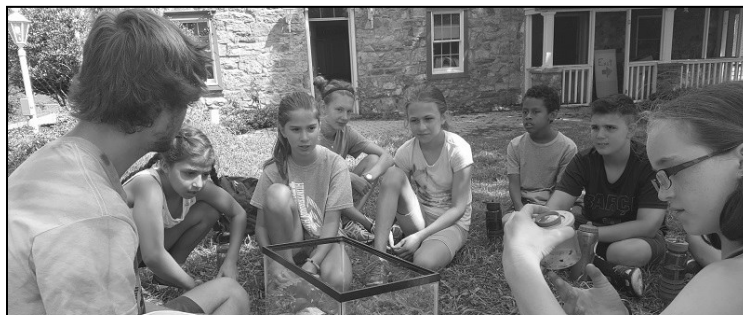
### ENVIRONMENTAL CAMP

Teens entering grades 9 & 10, 9:00 AM to 3:30 PM, overnight trip each Thursday, two-week sessions.

**A.** June 25 to July 6 at Teetertown, \$355

**B.** July 9 to July 20 at Echo Hill, \$375

Environmental Camp packs a lot of learning and adventure into an intensive two-week program. The session begins with team-building activities and the opportunity to participate in a high-ropes personal challenge course. This year, we will visit Sandy Hook to learn about ocean and marsh ecology. On-site activities include wildlife studies and outdoor skills practice. Participants are introduced to backpacking during an overnight on the Appalachian Trail. A flatwater canoe clinic prepares campers for a canoe-camping trip through a scenic New Jersey river during the second week of camp. Throughout the program, Environmental Camp focuses on the importance of ecological stewardship and individual responsibility.



### IMPORTANT REGISTRATION INFORMATION

**Registration for Summer Nature Program is conducted via a lottery system. Download a set of registration forms (3) from our website, or pick them up at the Arboretum. Please take note of the following information:**

1. The regular Parks Division program registration form **cannot** be used for Summer Nature Program.
2. Applications must be postmarked by **Wednesday, March 14**, or delivered to the Arboretum in person by 4:30 PM on this date. All applications must be completed in full with payment.
3. Please complete a separate set of registration forms (3) for each child. You may send the forms for your children together in one envelope, with one check.
4. We **cannot arrange** to place unrelated children in the same session.
5. Applications are selected through a random drawing.
6. Applicants will be notified by mail. Unsuccessful applicants receive a full refund.
7. Any spaces left in the program will be available during walk-in registration beginning **March 21** at 8:00 AM.
8. Children may initially enroll in only one session. Starting on **April 4**, participants can enroll in additional sessions as available.
9. All cancellations by participants are subject to a 30% service charge. Cancellations must be in writing. **Cancellations made less than one week prior to the start of your child's session will not receive a refund.**
10. IT IS EXPECTED THAT THE PROGRAM WILL BE FILLED, OR NEARLY FILLED, DURING THE LOTTERY. PLEASE APPLY THROUGH THE LOTTERY.

*Turn the page for more camps!*

**SUMMER CAMPS: FINE ARTS & SPORTS****CRAFT CAMP**

June 25 to June 29, 9:00 AM to 2:00 PM,

ages 10 to 15, Arboretum, \$160 (includes materials)

This unique program will expose your child to a multitude of crafts. Young artists will immerse themselves creating one-of-a-kind masterpieces. An eclectic mix of artistic media such as clay, felt, gourds, tile, wood, rocks, vines, and recycled items keep interest and enthusiasm high! New projects every year! Sculpt with clay, create with beads, weave a basket or two, and work on visual balance designing with things from nature. Campers should bring a drink, snack, and lunch. We encourage reusable containers. Send children in "old" clothing and shoes that can get a little dirty.

**PERFORMANCE CAMP**

**Session A:** July 9 to 13, entering grades 2 to 5

**Session B:** July 16 to 20, entering grades 6 to 9

Monday to Thursday 9:00 AM to 4:30 PM, Friday 9:00 AM to 7:00 PM, Deer Path Park, \$245

Children love this Performance Camp taught by Flying Ship Productions, who combine time-tested themes with original music and dialogue and inventive staging and choreography. Children will have the opportunity to stage a musical. The show contains original songs, costumes, props, and dances. The week culminates in a performance and picnic at Deer Path Park on Friday evening at 6:15. In addition to working on the musical, campers also create the set, make costumes and crafts, and participate in theatre and water games. Every child who attends Performance Camp is a star!

**ORCHESTRA CAMP**

July 16 to 20, 9:00 AM to 12:00 PM, Hunterdon

Central Regional High School, entering grades 7 to 12, \$190

Orchestra Camp is an excellent opportunity for students to work in small-group situations, as well as working together as a full orchestra. The Hunterdon Youth Orchestra will perform on Friday night on the last day of camp for family and friends. Please specify the instrument when you register; sorry, no piano. Led by the Hunterdon Symphony.

**\*NEW\* KAYAK/CANOE CAMP**

July 30 to August 3, 9:00 AM to 3:30 PM (campout Thursday into Friday), Arboretum, entering grades 8 to 12, \$250

This year we have ten new kayaks! If you enjoy the outdoors and water and want to learn how to kayak or canoe, or already kayak/canoe, then is the camp for you. We will start on a pond with getting in and out of the boat and how to paddle and move around. Then we will paddle on local rivers Tuesday and Wednesday. On Thursday into Friday, we will enjoy an overnight canoe camping trip on the Delaware River. We supply the canoes, kayaks, gear, training, and transportation. Our experienced leaders teach the ways of currents and eddies and how to paddle mankind's oldest craft, with a few new tricks. So come have fun on the water.

**ART CAMP FOR YOUNG ARTISTS**

**Session A:** August 6 to 10, **Session B:** August 20 to 24  
9:00 AM to 11:00 AM, Arboretum, ages 6 to 10

**ART CAMP FOR ARTISTS-IN-TRAINING**

**Session A:** August 6 to 10, **Session B:** August 20 to 24  
11:15 AM to 1:15 PM, Arboretum, ages 11 to 15

Either camp \$110 (includes materials)

Campers learn the principles of painting and drawing in a classroom and outdoor setting, using pencil, charcoal, and paint on a variety of still lifes. We will increase campers' understanding of color, composition, and the proper use of materials. Please bring a snack and drink. Remember to dress in old clothing and apply sunscreen. Instructor Lena Shiffman (website [www.lenashiffman.com](http://www.lenashiffman.com)).

**SPORTS FOR A LIFETIME CAMP: *Golf & Bowl***

August 13 to 17, 8:30 AM to 5:00 PM, Deer Path Park, entering grades 5 to 12, \$322 with bowling ball or bag & shoes or \$270 for camp only

This camp is taught by professionals who will teach your child to golf and bowl! We will meet at Deer Path Park and travel by County van to Heron Glen Golf Course in Ringoes. Heron Glen offers a driving range with both grass and mat hitting areas and a large putting green. After a week of practice, we will play some holes on Friday. Each day we will head back to Deer Path to eat lunch from home. Next we will head up to Oakwood Lanes in Washington to learn how to bowl. Their professional, attentive staff will ensure that your child has a great bowling experience. We will stop for ice cream on the way back (our treat)!

**CREATIVE THEATRE CAMP**

August 20 to 24, 10:00 AM to 2:30 PM (Friday until 4:00 PM), Echo Hill, ages 10 to 12, \$150

Campers will learn stagecraft while creating their own play. This production will be guided by the ideas of the campers; characters, plot, and setting are all based on their ideas. Movement, voice, theatre terms, and listening are practiced on day one and built on as the play is developed. We focus on listening to other actors and to the audience. The week culminates in a performance on Friday at 3:00 PM. Campers should bring a drink and lunch. Instructor Joe Nowosielski (website [www.artstechsolutions.com](http://www.artstechsolutions.com)).

**HERON GLEN JUNIOR GOLF CAMPS**

**BIRDIES CAMP:** ages 7 to 11, June 25 to 28, July 16 to 19, or July 30 to August 2

**EAGLES CAMP:** ages 12 to 16, July 9 to 12, July 23 to 26, or August 6 to 9

9:00 AM to 1:00 PM, Heron Glen Golf Course, \$299

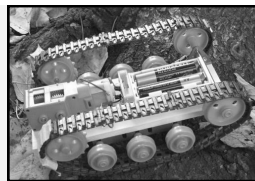
In this camp run by Heron Glen Golf Course, we will have on-course PGA instruction, including lessons with woods, irons, chipping, putting, and bunker play. Lunch is provided. To register: [www.heronglen.com](http://www.heronglen.com) or (908) 806-6804.



**SUMMER CAMPS: LEGO & SCIENSATIONAL: ALL NEW!****SCIENSATIONAL: SPACE NINE  
3-IN-1 All-TERRAIN ROBOT**

July 16 to 20, 9:00 AM to 12:00 PM,  
Arboretum, ages 8 to 12, \$161

Wow! Picture this on Mars: The Space 9 3-in-1 all-terrain Martian Robot will be able to do so many fantastic things. Campers will build this and take it home. This amazing robot has its own controller. It can travel on rough surfaces. It can grip objects and can be a fork lift. Campers just make some simple changes. This robot is so cool that different parts move as if it is dancing. You control this. Participants will also be able to build other robots working in small groups. Build a Sumo Wrestler, have Tug-of-War events, and make these robots do creative tasks for you. Robots in this portion of the workshop will not be taken home. Be part of Robot Technology the Sciensational Way.

**SCIENSATIONAL: CSI-CRIME  
SCENE INVESTIGATION**

July 16 to 20, 12:45 PM to 3:45 PM,  
Arboretum, ages 8 to 12, \$155

Campers in this program will be super science sleuths. Have fun learning about forensics, crime scene investigations, and crime lab chemistry as you perform as many as 15 different experiments designed to show you just how those tricky cases are solved. Search for the evidence, gather clues, and discover how science can help solve a mystery. Participants will: dust for fingerprints, analyze handwriting, test for blood type using simulated blood, examine hair and clothing fibers, practice chemistry to identify mystery substances, and much more. Participants will then use their skills to solve crimes of the century.

**SCIENSATIONAL: MODEL AIRPLANES,  
BRIDGE BUILDING, & ELECTRONIC GADGETS**

July 30 to August 3, 9:00 AM to 12:00 PM, Arboretum, ages 7 to 11, \$155

Build your own rubber-powered model airplane. Use your model as a learning tool in aerospace education, or just have fun building a sound airplane that actually flies when assembled. Have fun designing and building model bridges. Join us in our bridge building contest to see which one can hold the most weight. Learn simple engineering skills. Build six electronic projects. Some of them include a patrol car siren, burglar alarm, and Morse code transmitter. You will learn how the different electronic components work. Bring a little imagination and get ready to "Fly with Sciensational."

*Sciensational & LEGO Camps: Campers who sign up for both the morning and afternoon session in a given week may bring a lunch and stay through the lunch hour for free.*

**SCIENSATIONAL: THE ALL-TERRAIN  
TRACKER**

July 30 to August 3, 12:45 PM to 3:45 PM, Arboretum, ages 7 to 11, \$155

How about some land rover excitement? Build and take home your very own All-Terrain Tracker Vehicle! It travels the rough terrain overcoming objects in its path. Sciensational Workshops will bring its own course for you to conquer. Sand, stones, twigs, and balls will all be part of the challenge. How about a timed race? Campers will also learn about gears. Work in a group with your new friends as you design a robot you can control. Build a Sumo wrestler and be part of our battle box events. This camp has loads of fun and education in store the Sciensational way!

**BRICKS 4 KIDZ® LEGO® CAMPS** are high-energy, fast-paced settings where kids discover, explore, invent, and create. Each camper will receive a LEGO mini-model to take home. In addition to lots of building with LEGOs, our camps may include games and activities like car ramp challenges and zip line racing.

**LEGO CAMP: A Galaxy Far Away featuring STAR  
WARS®**

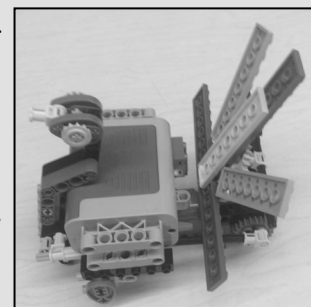
July 23 to 27, 9:00 AM to 12:00 PM, Arboretum, ages 6 to 12, \$150

Blast off into a galaxy far, far away to join the Rebel forces in their battle against the Empire. There will be motorized models based on Starfighters and TIE Fighters, an X-34 land cruiser, BARC Speeders, and even a JEDI Master. Campers will have plenty of opportunity to design and build their own STAR WARS models. In addition to building, there will be lots of games, STAR WARS trivia contests, and crafts to participate in. Bring your imagination and may the Force be with you.

**LEGO CAMP: ANIMAL GROSSOLOGY**

July 23 to 27, 1:00 PM to 4:00 PM, Arboretum, ages 6 to 12, \$150

If you're fascinated by the weird but true, wild and wacky, gross and yucky, then this is the camp for you! Spend the week discovering the zany biology of our animal friends. Each day we'll explore fascinating facts about the animal kingdom, focusing on two "creatures of the day." Don't be surprised to find actual skeletons and preserved examples of some of the animals displayed. Build two different animal models with LEGOs each day and fill your very own "Animal Grossology" booklet with crazy and cool facts you learn, complete with a picture of each model.



## VAN & BUS TRIPS

### STICKLEY MUSEUM AT CRAFTSMAN FARMS AND KIP'S CASTLE

Thursday, February 8, 10:30 AM to 5:30 PM, Arboretum, adults, \$15 plus a \$10 tour fee to be paid by you the day of the trip (bring a packed lunch)

Kip's Castle is a magnificent 9,000-square foot mansion that replicates a medieval Norman castle. The estate spans eleven acres of land on the ridge of First Mountain, resting in both Montclair and Verona townships, and provides spectacular views of New York City. The exteriors of both the castle and the 6,000-square foot, two-story carriage house are constructed of local trap rock trimmed with sandstone. The interior of the castle consists of thirty distinguished rooms of varying shapes which include vaulted ceilings and six ornate fireplaces. The former designer of our second stop, Gustav Stickley, was a spokesman and proponent for the Arts and Crafts philosophy. His furniture designs in the late 1800s were a radical departure from the furniture of the Victorian era. They reflected the Arts and Crafts ideals of simplicity, honesty in construction, and truth to materials. Craftsman Farms exemplifies Stickley's philosophy of building in harmony with the environment by using natural materials. In 1908, Stickley designed the farm to be self-sufficient. The produce grown on the farm was used in the restaurant operated by Stickley as part of his furniture showroom and department store in Manhattan. We will tour the log house of Craftsman Farms which proclaims the romance of our nation's agrarian past. We will eat lunch (**bring your own**) at 1:00 PM, therefore you might like to bring a snack and drink for the ride.

### BATTLESHIP NJ AND ADVENTURE AQUARIUM

Saturday, February 17, 8:00 AM to 6:00 PM, Arboretum, ages 8 through adult, \$50

We will ride a County van to the Battleship New Jersey, where we will begin with a tour that takes guests five levels up and two decks below. The Main Deck features an Exhibit/Museum that encompasses the 48 years in and out of service. Guides are available for questions and conversation in the Captain's Quarters. Then the group will visit Adventure Aquarium. With so much to offer, the aquarium is the perfect place to spend a day. Exhibits that are sure to catch your attention, like *Dinosaurs of the Deep* and *Creature Feature*, alongside hands-on "touch" exhibits that get you up close and personal with sharks and hippos, make this a day you won't soon forget. Transport is by Parks van. Trip cost does not

include food; participants can buy or eat a packed lunch at the aquarium.



### SIGHTSEEING TOUR OF HC PARKS (NORTH)

Sunday, February 25

### SIGHTSEEING TOUR OF HC PARKS (WEST)

Sunday, March 11

### SIGHTSEEING TOUR OF HC PARKS (SOUTH & SOUTH BRANCH) Date TBA in the fall

12:00 PM to 4:00 PM, Arboretum, adults, \$10

Guest Leader: Chip Colombo

Where are the parklands of Hunterdon County? Did you know that there are over 28 beautiful pieces of preserved county parklands? In addition, there are many state, town, and township parks that we will mention. Let's take a Sunday afternoon drive to see how many parks we can visit. Fascinating history, cool facts and stories, and a plethora of other information will be shared by our guest leader, Chip Colombo. Please wear sturdy footwear and weather-appropriate clothing for taking a few short hikes. Feel free to bring a snack and drink as no food stops are planned, other than perhaps a visit to a local general store.

### PHILADELPHIA FLOWER SHOW "WONDERS OF WATER" BUS TRIP

Tuesday, March 6, 9:45 AM to 7:00 PM,  
Deer Path Park, adults, \$65

Sit back & relax as we take you by coach bus to the world's oldest and largest indoor flower show! The show features large-scale gardens, elaborate landscapes, and over-the-top floral creations. Visitors are treated to fabulous design, live entertainment, gardening how-to workshops, and lectures by experts. Designers spend more than a year planning, primping, pruning and growing the exhibits that will transform an empty space into a beautiful oasis of color and life in the waning days of winter. Their commitment to excellence is evident in creative, inspiring presentations and in the diversity of beautiful plants that are lovingly coaxed into bloom in March. You can shop for plants and gifts, sample wines, and attend different seminars. For lunch, consider visiting the Reading Terminal Market across the street (on your own). For more information on this year's theme, Wonders of Water, visit [www.theflowershow.com](http://www.theflowershow.com).



### RAILROAD STATIONS OF HUNTERDON (NORTH)

Saturday, March 24, 9:00 AM to 4:00 PM, Arboretum, adults (teens accompanied by an adult are welcome), \$15

Guest Guide: Chip Colombo

All aboard! This Parks van tour will chug through history and travel to some train stations that have been rehabilitated for adaptive reuse, some that are in disrepair, and some that are just a memory. We will learn about several railroads that crisscrossed the county and the important roles that they played in its development. We will make a stop for a refreshment break (lunch is not included in the price). Please wear sturdy footwear and weather-appropriate clothing for taking a few short hikes.



**More VAN TRIPS****STATUE OF LIBERTY & ELLIS ISLAND (self-guided audio tour)**

Saturday, March 24, 9:00 AM to 6:30 PM, Arboretum, ages 8 through adult, \$35

Join the Parks Division as we visit the Statue of Liberty and Ellis Island on a County van trip. We will take a ferry from Liberty State Park, NJ to the Statue of Liberty where we will spend around 3 hours. We will do a self-guided audio tour with a handheld device, and also have access to the pedestal, the platform underneath the statue that includes the museum. We will then be taken to Ellis Island where we will have about 2 hours, and explore with another audio tour. Security is tight at the ferry, like in an airport, so extra time has been added. At the Statue you cannot bring backpacks, food, or drinks (except water) inside, but lockers will be available to rent. Both islands have food vendors. You are welcome to bring snacks for the van ride there and back.

**9/11 MEMORIAL MUSEUM BUS TRIP**

Saturday, April 7, 8:00 AM to 6:00 PM, Deer Path Park, all ages, small children not recommended, \$50

There are few places more sacred and solemn within our country than the 9/11 Memorial in New York City. Join us this April as we wander the grounds of the tragic site, view informational presentations in the Museum Theater while touring through the Memorial Museum, and explore the surrounding cityscape. The beautifully architected Memorial Museum is a grand testament to the sacrifices made on that fateful day, and is filled with informative exhibits and written accounts of what occurred. Guided tours with knowledgeable experts are offered by the museum if you wish to gain further insight on the events of 9/11. The nearby city blocks offer stunning views of downtown Manhattan and the Hudson Bay, as well as endless restaurant options. Security is tight at the Memorial, so plan accordingly. Backpacks are allowed, but no food or drinks are allowed inside the museum.

**CHERRY BLOSSOMS AT BRANCH BROOK PARK**

Tuesday, April 17, 9:00 AM to 3:30 PM, Arboretum, adults, \$18 (bring a bag lunch and drink)

Join us on a visit to Newark's Branch Brook Park, the nation's first county park, established in 1895. This park is listed on both the National and the New Jersey register of historic places and boasts having more than 4000 cherry trees. When in bloom, it is the largest display in the nation.

So pack a bag lunch and drink, put on your sturdy walking shoes, and dress for the weather. This 360-acre park is waiting to be explored!

**NITTY GRITTY CITY TOUR**

Friday, April 27, 8:00 AM to 7:00 PM, Arboretum, adults, \$25 plus \$30 (\$20 tour guide fee and a \$10 entry fee) to be paid by you on the trip (lunch is not included in the price) Tour Guide: Jerry Silverman... back again!

Let's go learn about and see many of the "other interesting things" in Philadelphia, not just City Hall but some quirky stuff too. Jerry's initial thoughts: "start at 30th Street Station and circle the area of Market, Pine, 19<sup>th</sup>, and the Schuylkill River... lots of beautiful bridges, the boardwalk in the center of the river, homes, trees, murals, and history!" The group will load up into the Parks' touring van bound for Philadelphia and meet up with Jerry. We will walk for about 2 1/2 to 3 hours. We will lunch at a local eatery, after which we will visit the Mütter Museum. America's finest museum of medical history displays its beautifully preserved collections of anatomical specimens, models, and medical instruments in a nineteenth-century "cabinet museum" setting. The goal of the Museum is to help visitors understand the mysteries and beauty of the human body and appreciate the history of diagnosis and treatment of disease. Please dress appropriately for the weather, and wear sturdy footwear for miles of city hiking. You may bring a couple energy bars and a drink for the van rides and the walk about! If being on your feet all day is a problem, this might not be the trip for you!

**GARDEN TOUR: WILLOWWOOD & BAMBOO BROOK**

Tuesday, May 8, 9:00 AM to 3:00 PM, Arboretum, adults, \$15, plus a \$10 tour fee to be paid by you the day of the trip. We will visit two Morris County parks on this trip. At Willowwood Arboretum, we will view a short PowerPoint presentation and enjoy a walking tour, and eat lunch in "The Barn" (please bring a bag lunch). Willowwood encompasses 130 acres of rolling farm land, and has about 2,100 kinds of native and exotic plants, many of them rare. In addition to the formal gardens near the residence and undisturbed forest, historic collections include oak, maple, willow, magnolia, lilac, cherry, fir, pine, a superb specimen of Dawn Redwood (*Metasequoia*) now more than 98' tall, masses of ferns, and handsome stands of field and forest wildflowers. Next off, we will head to Bamboo Brook Outdoor Education Center for another walking tour. Bamboo Brook is located on 670 acres, and was once known as Merchiston Farm and was the home of William and Martha Brookes Hutcheson from 1911 to 1959. Ms. Hutcheson one of America's first women landscape architects. Her design of this garden was completed in the late 1920s, shortly after the publication of her book, *The Spirit of the Garden*, in 1923. Portions of the designed landscape of this garden have been restored to their circa 1945 appearance with careful attention to the plants used. Please bring a bag lunch and drink, wear sturdy walking shoes, and dress for the weather.

## More VAN TRIPS

### GROUNDS FOR SCULPTURE

Wednesday, May 16, 8:30 AM to 4:00 PM, Arboretum, adults, \$15, plus an \$18/adults, \$15/senior (65 & over) admission fee to be paid by you on the trip (lunch is not included)

Grounds For Sculpture is a magical place where art and nature are always at play. At its core are more than 270 sculptures by renowned and emerging contemporary artists, each thoughtfully positioned on meticulously landscaped parkland full of thousands of exotic trees and flowers. It is a feast for the senses. Join us and discover the beauty, charm, whimsy, and inspiration that these 42 acres hold! Grounds For Sculpture is situated on the former New Jersey State Fairgrounds and includes three of its major historic buildings, restored for a variety of purposes. Lunch is not included in the price; on site is The Peacock Café that offers hot and cold sandwiches (prices range from \$9 to \$14) and the Rat's Restaurant (more upscale; reservations are suggested). No outside food is allowed on the grounds, but you are welcome to bring snacks for the van ride.



### SPACE FARMS ZOO AND MUSEUM

Saturday, June 16 (rain date: Sunday, June 17), 8:30 AM to 5:30 PM, Arboretum, ages 6 through adult (bring car seat if necessary), \$16, plus an entrance fee to be paid by you the day of the trip: adults \$14.50, ages 13-17 \$11.50, ages 6-12 \$10.50. **Cash only.**

A family-friendly one hundred-acre zoo and museum complex... Space Farms has over 500 live wild animals including lions, tigers, bears, leopards, jaguars, lemurs, buffalo, sheep, deer, goats, pigs, kangaroos, monkeys, llamas, hyenas, and snakes! The Museum complex has nine large buildings with over fifty antique cars, motorcycles, old horse-drawn carriages and sleighs, antique dolls, one of the largest private antique firearms collections, old farm machinery, Native American artifacts, a cool rock collection, and much more. Step right up to local American History and explore the Space Farms museum artifacts. Children love the attention of free roaming chickens, ducks, and geese. A visit to this quirky privately-owned Zoo and Museum is a great way to spend the day! Bring a picnic lunch and enjoy the large picnic area and playground or grab a bite to eat at Extreme Pizza, an onsite pizza parlor (food is not included in the price). You might like to bring a snack for the hour and a half (each direction) van ride.

### BRONX ZOO VAN TRIP

Saturday, May 26, 8:00 AM to 5:00 PM, Arboretum, ages 8 through adult, \$50 (includes admission and additional attractions mentioned below)

Join the Parks Division as we journey to the Bronx Zoo. This is the world's largest urban zoo with more than 600 species from around the globe! Get up close with mammals, birds, reptiles, fish, and insects. Learn about their natural history, biology, cultural roles, and conservation status. Enjoy the total experience at the zoo, which includes special attractions like the Butterfly Garden, the Children's Zoo, the Congo Gorilla Forest, the Zoo Shuttle, the 4-D Theatre, and Jungle World. You will have about five hours to enjoy yourself. You can eat lunch in the main restaurant: the Dancing Crane Café, or at the Terrace Café located by the Children's Zoo (lunch not included). There are many stands throughout the zoo offering snacks and also many tables available for you to eat your own boxed lunch.



### OCEAN GROVE: WOMEN'S HISTORY WALKING TOUR and MORE

Tuesday, June 5, 8:30 AM to 6:30 PM, Arboretum, adults, \$16 plus \$25 fee to be paid by you the day of the trip (**this fee includes tour and lunch**), Guest Guide: Chip Colombo. This tour, led by history professor Dr. Lyndell O'Hara, takes participants to various stops in Ocean Grove where women made history. Costumed actors represent history's characters, such as physician Margaret Coleman, evangelist Phoebe Palmer, evangelist Amanda Berry Smith (the first colored international evangelist), and innkeeper sisters Lydia and Matilda Bull who are as comical as they are enlightening. Tour is on foot and lasts approximately 90 minutes. The group will eat at The Starving Artist (included). After lunch participants can enjoy free time or join our guide Chip for more history, architectural information, and fun facts! You might like to bring a snack and drink (that may be left in the van) for the hour and a half (each direction) van ride.

### OCEAN GROVE: 50<sup>TH</sup> ANNUAL HOUSE TOUR

Friday, August 3, 8:30 AM to 6:30 PM, Arboretum, adults, \$16, plus \$25 tour fee to be paid by you the day of the trip (lunch is not included). Guest Guide: Chip Colombo Outstanding renovations, ocean views, and fantastic kitchens are featured on this acclaimed house tour. To celebrate their 50th anniversary, we will tour some of the unique homes found in Ocean Grove. The all-day, self-guided tour includes historic homes as well as a tent home, an inn, and other historic buildings. Participants are welcome to tour on their own (free shuttle bus service available) or join Chip & Liz as we walk about. \*Most homes have stairs and are not generally accessible for those with mobility impairment. Rain or shine. Feel free to bring a snack and drink for the hour and a half (each direction) van ride. If being on your feet all day is a problem, this will not be the trip for you!



## HISTORY THROUGH AERIAL PHOTOS

Presenter Mike McCann, during his 21 years with the New Jersey Department of Environmental Protection, examined the histories of properties. He reviewed aerial photographs from 1930 to the present under a stereo microscope while in the process of determining whether land qualified for New Jersey's Green Acres Program. Now he gives presentations of scanned aerial images highlighting the changes that have occurred in the landscape of the region. Mike enthusiastically shares his wide-ranging knowledge, fun quirky facts, and riveting stories in his magnificent shows!

### TOWPATHS & TALES \*NEW\*

Friday, March 9, 7:00 PM to 9:00 PM, Arboretum, adults, \$3

Take a flight back in time over a much different Delaware Valley—one in which canals that had once powered the region remained largely intact, less than a decade after abandonment—and return to the present over the landscape as we know it today, without ever leaving the ground!

### THERE USED TO BE A RAILROAD

Friday, March 16, 7:00 PM to 9:00 PM, Arboretum, adults, \$3



New Jersey and railroads go way back, all the way to 1815 when the state granted John Stevens of Hoboken the first railroad charter in the U.S. Although Stevens's New Jersey Railroad was never constructed, the Camden & Amboy Railroad, under the direction of Stevens's sons, began service between South Amboy and Bordentown in 1833, the first of many railroads to lay track across the Garden State. This program provides a glimpse of a New Jersey long gone—one in which you could get practically anywhere by rail.

## GARDENING PROGRAM

### DAD AND ME: VALENTINE FLORAL ARRANGEMENT

Tuesday, February 13, 5:00 PM to 7:00 PM, Arboretum, all ages, \$25 per father-child pair (\$10 per additional arrangement)

No need for last minute chocolates or a dozen boring roses. Join Senior Gardener Jason "Jaybird" Strauss for a fun evening with your son or daughter making a memorable valentine floral arrangement just for your special Valentine. We will provide everything you need to create a beautiful arrangement that will brighten your Valentine's Day.



## NEW DIVISION HEAD AT PARKS



*Parks staff. Dan Bush is sixth from the right.*

The Hunterdon County Freeholders, fulfilling their goal of joining experience with vision in a new Parks Division Head, have named Holland Township's Dan Bush, a 23-year veteran of Hunterdon County service, including 13 years in Public Works supervisory positions.

Freeholder Director John E. Lanza stated, "Our over 8600 acres of parkland, owned or managed by Hunterdon County, are arguably the County's most prized and valuable asset; therefore, the protection, maintenance, and enhancement of the parks and parks programming are a priority for the Freeholder Board. That is why the selection of the right Parks Division Head is so significant. And Dan Bush is that right choice, as he brings together the two vital components necessary for successful parks management: experience and vision."

A lifelong resident of Hunterdon County and the present Mayor of Holland Township, Bush has "extensive land use, recreation, and parks management experience from his tenure as a hands-on Mayor, and Township Committee and Planning Board member. He is also long experienced in maintenance management issues from his service in Public Works," according to Freeholder Lanza.

Prior to his promotion to Parks Division Head, Bush was the County Department of Public Works' General Supervisor for the South County Region. He holds a license as a certified Pesticide Applicator and was responsible for oversight of the pesticide-spraying program for 150 miles of County guardrail vegetation control. Bush also holds a certification as a Stormwater Management Administrator.

Bush's Holland Township experience includes negotiating the purchase of Bethany Ridge to develop a local park that adjoins the County park trail system, securing historic preservation grants for the Township, and liaison for Farmland Preservation, among other municipal assignments. He has served on the Township Committee for eight years.

Active in the community, Bush is a past 4-H member, formerly a member of the Milford Fire Company, a Master Mason, Darcy Lodge, and the Chairman of the Hunterdon County Employee Appreciation Committee.

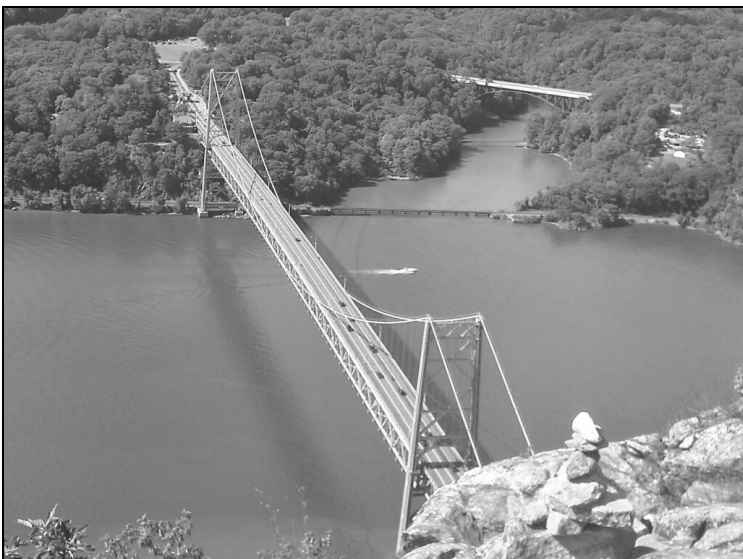
Following the retirement of Carol Bodder, the Parks Division Head position was publicly advertised. A selection committee that included Freeholder Suzanne Lagay recommended Dan Bush for the position, after conducting interviews with the several of the most qualified respondents.

**WEEKEND CAMPING TRIPS**

**BACKPACKING: Hudson Highlands & Fahnestock**  
Saturday, April 28 at 8:00 AM to Sunday, April 29 at 5:00 PM, meet at Arboretum, ages 14 through adult, \$50

Note: Limit of 9 participants on this trip

Backpack in Hudson Highlands and Clarence Fahnestock Memorial State Parks, NY! We will discuss the importance of the Appalachian Mountains while enjoying beautiful scenery. Learn the basics of backpacking as we set up tents, cook, and hike together. The group will meet at the Arboretum Saturday morning and drive to the trail in a county van. We will start in Fahnestock along Dennytown Road in Putnam County and hike about 8.5 miles to Graymoor Campsite where we will spend the night. Sunday, we will hike about 6.5 miles through Hudson Highlands, crossing the Hudson River and passing through Bear Mountain Zoo on the way back to the van. **This is a very strenuous activity, and participants must be in good physical condition and ready to hike 6.5 to 8.5 miles each day with a full backpack.** All participants must attend a **pre-hike meeting on Monday, April 23 at 7:00 PM** at the Arboretum. All participants must backpack with the following items: clothing, sturdy shoes, raingear, bowl, fork, spoon, at least two liters of water, two lunches, dinner, breakfast, and a sleeping bag. Also, if you have them, please bring: lightweight cooking dishes (mess kit), a stove, a tent, and a backpack. **Participants provide all food. On your registration form, please indicate if you will need to borrow a backpack or two-person tent.** For new backpackers, or experienced backpackers who want to hike with a group.



**LET'S GO CAMPING (also Boy Scout Merit Badge)**  
Saturday, June 30 at 9:00 AM to Sunday, July 1 at 11:30 AM, Echo Hill, ages 8 through adult, \$50 (includes lunch, dinner, and breakfast)

Do you dream of camping in the woods? Do you know what you would need and how to prepare for a campout? Would you like to cook on an open fire? Well, Let's Go Camping! Join Recreation Leader Patrick Eckard for an overnight campout at Echo Hill. All participants are required to attend a **planning meeting on Wednesday, June 27 at 7:00 at the Arboretum.** At this meeting, we will plan a menu together, discuss equipment needed for different types of campouts, discuss strategies on packing, and learn how to prevent raids by animals. During the campout, we will demonstrate fire building (several techniques), pitching a tent correctly, knot tying, and using camp tools safely. All participants will get the chance to help cook a meal and be on kitchen patrol. During free time, enjoy Echo Hill pond and trails. When night falls, we will have an evening campfire and prepare traditional snacks. There are no more excuses... Let's Go Camping! There is a flush toilet in the lodge, a short distance from the site. We have tents available to borrow, but feel free to bring your own. Boy Scouts may obtain their merit badge by setting up an additional meeting with Patrick.



**CANOE CAMPING: June 2-3. SEE CANOEING,** opposite page.

To join our monthly email list, email [parks@co.hunterdon.nj.us](mailto:parks@co.hunterdon.nj.us).

Let us deliver *The Harbinger* and other program updates right to your inbox!

Names and addresses of county-held mailing lists are subject to disclosure pursuant to the NJ Open Public Records Act.

## CANOEING HUNTERDON'S WATERWAYS: OUR 39th YEAR!

**NEW THIS YEAR: 10 KAYAKS!** Please indicate on your registration form if you would like a kayak. Join the Parks on the river where we have been paddling for many years. It is fun, educational, and great exercise! Spend a day with nature. Just bring water, lunch, and a smile—we will do the rest. We supply the canoes, kayaks, gear, training, and transportation. Our experienced leaders teach the ways of currents and eddies and how to paddle mankind's oldest craft, with a few new tricks.

### RIVER TRIPS

8:15 AM to about 3:30 PM, Leave from Arboretum, ages 8 through adults, \$35 per trip

Your leaders will fit you with a lifejacket and paddle and then drive to the river, where they will discuss maneuvering techniques and canoe safety. Our leaders will guide you down the river. We paddle for about two hours, stop for lunch, and paddle for about two more hours. We are flexible with our time, which depends in part on natural forces, such as wind speed and water level. Our aim is to return to the Arboretum by 3:30 PM, give or take an hour.

Sat., April 28: **South Branch**

Sun., May 6: **Delaware: Kingwood to Bull's Island**

Sat., May 26: **Delaware: Phillipsburg to Riegelsville**

Sun., June 10: **Delaware: Martins Creek to Phillipsburg**

Sat., June 23: **Delaware: Phillipsburg to Riegelsville**

Sat., July 7: **South Branch**

Sat., July 21: **Delaware: Martins Creek to Phillipsburg**

Sat., Aug. 4: **Delaware: Phillipsburg to Riegelsville**

Sun., Aug. 19: **Delaware: Kingwood to Bull's Island**

Sat., Sept. 8: **South Branch**

Sun., Sept. 23: **Delaware: Phillipsburg to Riegelsville**

Sat., Oct. 13: **Delaware: Kingwood to Bull's Island**

Sat., Oct. 27: **Leaders' Choice**

***Please note:** Due to water levels or other circumstances beyond our control, it may be necessary to select an alternative river. Leaders may make this change at any time in order to provide a safe and fun experience.*

### POND PADDLES: A GOOD FIRST TRIP!

**Session A:** Sat., April 14, 9:00 to 11:00 AM, Clinton Pond

**Session B:** Sat., April 14, 12:00 to 2:00 PM, Clinton Pond

**Session C:** Sun., April 15, 9:00 to 11:00 AM, Teetertown

**Session D:** Sun., April 15, 12:00 to 2:00 PM, Teetertown

Ages 8 through adult, \$20

Saturday paddles meet at the Clinton Town parking lot off Halstead Street & Water Street. Paddle past the lily pads, under the road bridge, past the historic Red Mill, up to the spillway of the Spruce Run Reservoir, and back. Sunday paddles meet at the stone house at Teetertown Preserve, 30 Pleasant Grove Road, Port Murray (the middle entrance). Both are great for children ages 8 and up (with an adult), senior citizens, beginners, folks with special needs (please inform us in advance), or those with a hankering to take a leisurely paddle and commune with nature.

### SUNSET PADDLE ON ROUND VALLEY

**Session A:** Friday, June 8 **Session B:** Friday, July 13  
6:00 PM to 8:30 PM, Round Valley Reservoir Boat

Launch, ages 8 through adult, \$25 per session

Treat yourself to a leisurely evening sunset paddle. The group will meet at Round Valley Reservoir Boat Launch (white van with green canoes). Bring a flashlight and a jacket: it can get much cooler by the water after sunset.

### OVERNIGHT CANOE TRIP (BSA Merit Badge)

Saturday, June 2 at 8:00 AM to Sunday, June 3 at 4:00 PM, Arboretum, ages 12 to adult, \$65 (includes 3 meals)

This trip will leave the Arboretum at 8:00 AM on Saturday and head to the Delaware Water Gap to put in. We will paddle for a couple hours, stop to have a picnic lunch (please bring lunch for Saturday), and then camp at one of the wilderness sites on the river. The group will cook dinner and enjoy the nature around us. The next day, we will cook breakfast and head down the river. We will stop and have a picnic lunch (provided). There will be time to swim both days as we travel.

Participants must attend a **pre-camp meeting on Wednesday, May 30 at 7:00 PM** at the Arboretum. **On your registration form, please indicate any dietary restrictions** and if you will need to borrow a tent. Boy Scouts may obtain their merit badge by setting up an additional meeting with Patrick Eckard.

### PLANNING YOUR CANOE TRIP

Pre-register by the Wednesday before the trip. Please note: Due to water levels or other circumstances beyond our control, leaders may choose an alternative river. If we cancel the trip for any reason, we will call you as soon as we make the cancellation, but our trips run rain or shine! Dress in layers so you can adjust to changing temperatures. Durable old clothes are best, especially wool and polypropylene fleece in cool weather. Sneakers are recommended; no sandals, boots, or heavy shoes. Bring lunch (packed in waterproof container), lots of water, sunscreen, a rain jacket, a hat, eyeglass strap, etc. A complete change of clothing can be packed in a waterproof bag to be carried in your canoe or to be in the van for the trip's end. No alcoholic beverages. No pets are allowed, except for guide animals.

### SCHEDULE YOUR OWN TRIP

We are happy to tailor a canoe trip to the needs of your group, school, club, charity, or service organization. A pond paddle makes a great birthday party! For questions or to be added to our canoe email list, contact Patrick Eckard at [peckard@co.hunterdon.nj.us](mailto:peckard@co.hunterdon.nj.us).

## RECREATION PROGRAMS

### FREE RECREATION WALKS

Wednesdays, 9:00 AM to 11:00 AM, all ages, free; please pre-register

**March 14:** Echo Hill Park, 42 Lilac Drive, Flemington 08822

**March 28:** Point Mountain North Section, 417 Penwell Road, Port Murray 07865 (lower fields)

**April 11:** Crystal Springs, meet at Teetertown Group Parking, 20 Pleasant Grove Road, Port Murray 07865

**April 25:** Columbia Trail, meet at Califon Island Park, 30 Bank Street, Califon 07830

**May 9:** Laport Reserve, 216 Mountain Road, Ringoes 08551

**May 23:** Round Mountain Section of Deer Path, 100 Foothill Road, Flemington 08822

Meet Patrick Eckard at each location and he will introduce you to the beauty of the parks as he inspects the trail systems. He will tell you the history of each park as you get some fresh air and exercise. Then come back on your own to hike the trails at your leisure. These trails are easy to moderate hikes.



### HOMESCHOOL RECREATION SERIES

Second Wednesday of the month, February through May, 3:00 PM to 4:00 PM, Echo Hill, ages 6 and up, \$20 per child for all four lessons, children must be accompanied by an adult and adult attends for free. This is a four-part recreation series designed for homeschooled children. On February 14, we will make Valentine's Day cards and other crafts. On March 14, we will learn how we make sap into maple syrup. On April 11, the group will focus on Native Americans and do some related crafts. We will close with making food over a campfire on May 16.

### MAPLE SAP COLLECTION

Saturday, February 10, 1:00 PM to 2:30 PM, Echo Hill, ages 5 through adult, \$3

Collecting the sap is a crucial step of the maple sugaring process! Many methods are used on commercial farms, but the basic idea is the same—moving the sap from the maple trees to the stove. Come participate in the process at Echo Hill! We will meet at the playground and then walk to the sugar bush (five to ten minutes). This program will also be available to groups during weekdays in February—please call us to schedule a group.



### FISHING CLINIC (also Boy Scout Merit Badge)

Friday, May 11, 5:00 PM to 7:00 PM, Echo Hill pond, ages 6 through adults, \$8 (includes bait and supplies)

Let us show you the basics of fishing, including safety, etiquette, equipment, and casting. Meet Patrick Eckard, Recreation Leader, at Echo Hill pond. Fishing rods are available to borrow. Bait, hooks, bobbers, and weights are provided. If you have your own fishing equipment, you may bring it with you.

Organized groups can also request this program on another date. Call us to set up this program for a group. Boy Scouts may obtain their merit badge by setting up an additional meeting with Patrick.



### CPR AND FIRST AID FOR THE COMMUNITY COURSE (also Boy Scout Merit Badge)

Saturday, May 19, 9:00 AM to 4:00 PM (CPR: 9:00 AM to 12:00 PM and First Aid: 1:00 PM to 4:00 PM), Echo Hill, ages 12 through adult, CPR \$25; First Aid \$25; or both for \$45

If you have ever wanted to learn CPR and First Aid, this is the time. These courses are taught by an American Heart Association (AHA) instructor. You will learn Adult, Child, and Infant CPR, Choking, and First Aid, allowing you to help anyone of any age. *This is not a course for health care personnel.* Sign up for CPR and/or First Aid, and bring a lunch if you are doing both classes. Boy Scouts may obtain their merit badge by setting up an additional meeting with Patrick.

*\*The American Heart Association strongly promotes knowledge and proficiency in CPR and instructional material for this purpose. Use of these materials in an education course does not represent course sponsorship by the American Heart Association. Any fees charged for such a course, except for a portion of fees needed for AHA course material, do not represent income to the Association.*

### 42nd MUSIC UNDER THE STARS FREE CONCERT SERIES

Thursdays, June 28 to August 16, 7:00 PM to 9:00 PM, Deer Path Park, all ages, free!

We hope everyone enjoyed last summer's concert series! This year, the concerts will run every Thursday from June 28 through August 16. We are looking for entertainers; if you would like to be considered, please contact Recreation Leader Patrick Eckard at [peckard@co.hunterdon.nj.us](mailto:peckard@co.hunterdon.nj.us) before March 27.



**Pre-registration required & children must be accompanied by an adult, unless otherwise noted**

***All workshops take place at the Arboretum. Cost includes materials. Instructor Liz Braidwood Fulmer.***

## ADULT BASKETRY WORKSHOPS

### UFO...UNFINISHED OBJECTS

Monday, February 5, or Monday, May 14, 6:00 PM to 9:30 PM, \$5 per session

Do you have a basket that you have not finished and would like to work on? Or a basket kit you always wanted to try? Join us for this UFO class.

### HEART BASKET

Tuesday, February 6, 6:00 PM to 10:00 PM, \$22

Make a heart-shaped basket. **SKILL LEVEL:** Easy to moderate.

### ADVANCED WEAVE-ON-A-MOLD

Wednesdays, March 7 & 14, 6:00 PM to 10:00 PM, \$28  
Weave over a mold. Make a 7" round Catshead Basket using herringbone weave, with a handle and figure-eight wrapped rim. Or an 8"x 6" rectangular Spoon Basket herringbone weave, with a handle and figure-eight wrapped rim. Available are 4 catshead molds and 3 spoon basket molds, please designate your desired mold; it will be first-come first-served. **SKILL LEVEL:** Difficult.

### BEGINNER WEAVE-ON-A-MOLD

Monday, March 19, 6:00 PM to 10:00 PM, \$22

Create a 6" round Trinket Basket weaving over a mold. No handle.

### SMALL OVAL BASKET

Monday, March 26, 6:00 PM to 10:00 PM, \$17

Create a small oval basket using round reed. **SKILL LEVEL:** Easy to moderate.

### BASKET VASE

Wednesday, April 11, 6:00 PM to 10:00 PM, \$20

Weave a basket over top of a flower vase. **SKILL LEVEL:** Moderate to difficult.

### CARRY-IT

Monday, May 7, 6:00 PM to 10:00 PM, \$25

Weave an 11" x 13" shallow rectangular basket with a handle.



## CHILD & ADULT BASKETRY & CRAFTS

*Children 10 and under must be accompanied by an adult & work on one project as an adult/child team. Children 11 through adults may attend solo. Please check ages below for specific projects. Cost is per project.*

### DREAM CATCHER

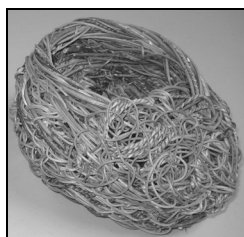
Monday, February 12, 5:30 PM to 6:30 PM, ages 6 through adult, \$3

Make a small wreath and then fill it with a dream catcher.

### TRINKET BASKET

Sunday, March 18, 12:00 PM to 4:30 PM, ages 7 through adult, \$22

Hands on is fun! Weave a cute round basket. Students start by inserting the spokes into a slotted wooden base, and attach the base to a wooden mold. Weaving over a mold makes shaping your basket a snap. The finished basket measures approximately 6" in diameter and 5" tall. Makes a great gift!



### MAKE A BIRD'S NEST BASKET

Sunday, April 15, 12:00 PM to 4:30 PM, ages 7 through adult, \$18

Enjoy free form art work! Create a small bird's nest-like basket using rattan reed, vines, ribbons, strings, beads, and more.

## PHOTOGRAPHY WORKSHOP

### DSLR CAMERA BEGINNER CLASS

Sunday, April 22, 12:00 PM to 4:00 PM, Arboretum, adults, \$40, Guest presenter: Thomas Romeo

Do you have a digital DSLR or mirror-less camera and want to take your photos to the next level but are afraid to leave the auto mode? This hands-on-class is for beginners and amateur photographers looking to gain a better understanding of the automated modes and features, as well as the manual controls and capabilities, of your digital SLR or mirror-less camera. You will be able to use your creativity and vision and get your camera to do what you want instead of what it thinks you want. Please bring your camera and any accessories, manual, and questions. *This class is **not** for point-and-shoot cameras.*



**ADULT ART:** Instructor Charles David Viera**BEGINNER AND INTERMEDIATE DRAWING AND PAINTING****Session A:** Six Wednesdays, February 21 to March 28**Session B:** Six Wednesdays, April 11 to May 23 (no class 5/2)

9:30 AM to 12:30 PM, Arboretum, \$140 (materials not included)

This is a great place to start to learn the basics of painting and drawing in an educational, supportive, and fun environment. Students begin each semester with instruction in the basic rules of drawing, which includes information on contour, value, and composition, and then move on to the study and use of color. Working from a variety of subject matter, the instructor will offer information on the proper use of materials, composition, and color theory via frequent group and individual critiques. Students should only bring black and white drawing materials to the first class. The instructor will discuss the color materials (pastels, oil, acrylic, and watercolor paints) that you may utilize during the class.

**INTERMEDIATE TO ADVANCED DRAWING AND PAINTING****Session A:** Six Fridays, February 23 to April 6 (no class 3/30)**Session B:** Six Fridays, April 13 to May 25 (no class 5/4)

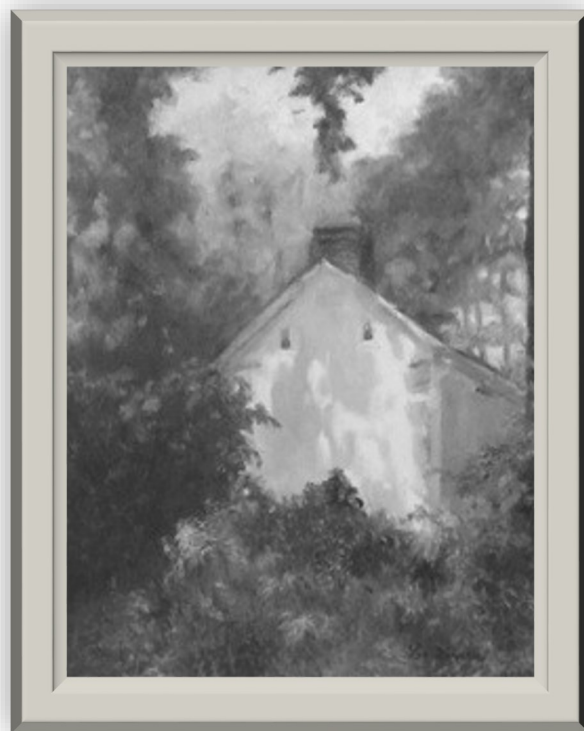
9:30 AM to 12:30 PM, Arboretum, adults, \$140 (materials not included. Some sessions may require an additional \$5 model fee, collected during the first class)

The curriculum of this class is devised to offer students with some previous instruction a structured, but open and supportive environment in which to create.

Working from a variety of studio assignments, or independent projects of their own design, each student will be encouraged to explore academic as well as more expressionistic and abstract options via group and individual critiques and illustrated lectures referencing the history of painting. Open to pastel, oil, watercolor, and acrylic painters with some experience. *Some six-week sessions may require an approximate \$5 model fee that will be collected the first class.*

**LANDSCAPE PAINTING: SUMMER MORNING LIGHT****Session A:** Six Wednesdays, June 27 to August 1**Session B:** Six Fridays, June 29 to August 3  
9:00 AM to 12:00 PM, Echo Hill Park, ages 15 through adults, \$140 (materials not included)

Landscape painters through history such as Monet and Renoir were all inspired by the colors offered by working “Plein Air” from the early morning light. In this class, artists of all levels will get to experience what those artists enjoyed with a supportive and inspired instructor to assist them. Working on location at one of the most picturesque sites in Hunterdon County, students will be inspired by beautiful and historic Echo Hill Park as they improve their skills. Beginner and advanced instruction in drawing, composition, color theory, and the proper use of materials is offered through group and individual critiques, demonstrations, and historical references. Open to students of all levels and working in any medium. Experienced students should bring their favorite medium while beginners should bring drawing materials to the first class where color materials will be discussed. Light easels and chairs are provided.

*Created by Charles David Viera, instructor***PRE-REGISTRATION IS REQUIRED**

Programs require advance registration, unless otherwise stated. Forms are available on the back of this brochure, at our office, or online: [www.co.hunterdon.nj.us](http://www.co.hunterdon.nj.us) (click on “Parks & Recreation”). Cash or check only.



**ADULT ART:** Instructor Lena Shiffman**THURSDAY MORNING ART STUDIO**

Time: 9:30 AM to 12:00 PM

**THURSDAY AFTERNOON ART STUDIO**

Time: 12:30 PM to 3:00 PM

**THURSDAY EVENING ART STUDIO**

Time: 6:30 PM to 9:00 PM

**Session A:** Five Thursdays, March 1 to March 29 (snow date Sunday 4/8)**Session B:** Five Thursdays, April 5 to May 3 (snow date Sunday 5/6)**Session C:** Five Thursdays, May 10 to June 7 (snow date Sunday 6/10)**Session D (EVENING ONLY):**

Five Thursdays, August 2 to August 30

Arboretum, \$100 (materials not included)

Don't think you can draw or paint, but would like to give it a try? "Everyone has talent, they just don't know it!" says art instructor and illustrator Lena Shiffman.

Using a variety of subject matter, including still life subjects and photographs, Ms. Shiffman will work with students to improve their drawing and painting skills. Students may work in charcoal, pastels, oil, acrylic, or watercolor paints. *Students supply their own materials.* Beginners, please bring charcoal sticks and charcoal pencils, an eraser, and a medium sketch pad (14 x 18") to the first class. Material list will be supplied at the first class. Join us for a day or evening class of fun in a relaxed atmosphere; you will be amazed at what you can accomplish! *All ability levels welcome!*



*Created by student  
Gabriella Yalenti*

**ART BOOT CAMP FOR ADULTS with Lena Shiffman**

Monday through Friday, August 27 to August 31, 9:30 AM to 12:00 PM, Arboretum, \$100 (materials not included)

Calling all artists to join us for a week of art boot camp at the Arboretum. Spend five consecutive mornings in a fun and relaxed atmosphere creating with Lena Shiffman. Use a variety of subject matter, including still life subjects and photographs, and some "plein air" if the weather permits. Ms. Shiffman will work with students to improve their drawing and painting skills. Students may work in charcoal, pastels, oil, acrylic, or watercolor paints. *Students supply their own materials.* Beginners, please bring charcoal sticks and charcoal pencils, an eraser, and a medium sketch pad (14 x 18") to the first class. You will be amazed at what you can accomplish in just one week! *All ability levels welcome!*

**CHILDREN'S ART:** Instructor Lena Shiffman**BLOOMING YOUNG ARTISTS****Session A:** Six Saturdays, February 24 to April 7 (no class 3/31)**Session B:** Six Saturdays, April 21 to June 2 (no class 5/26)

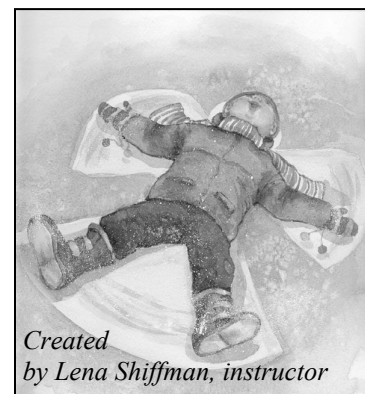
9:00 AM to 10:00 AM, Arboretum, ages 6 to 10, \$84 (includes materials)

Learning the principles of creating art with illustrator Lena Shiffman is lots of fun! Explore drawing, painting, sculpture, and more. Ms. Lena's gentle approach encourages and guides students. Visit different media such as pencil, acrylics, watercolor paint, clay, and paper. Students use still lifes... stuffed toys, taxidermied animals, photos, and something brought from home. We might also go outdoors to draw nature! The fundamental principles will be the focus: understanding color, composition, and the proper use of materials. Don't miss this chance to have your blooming young artist put his or her heart and soul into creating keepsakes! Ms. Lena works well with beginners to very advanced students. Remember to dress in old clothing. Students are encouraged to sign up for one or both sessions.

**STUDIO TIME for ARTISTS-IN-TRAINING****Session A:** Six Saturdays, February 24 to April 7 (no class 3/31)**Session B:** Six Saturdays, April 21 to June 2 (no class 5/26)

10:15 AM to 11:45 AM, Arboretum, ages 11 to 17, \$94 (includes materials)

Explore, learn more advanced techniques, and improve your abilities with color, shading, composition, and perspective. Instructor Lena Shiffman's gentle approach and ability to work with beginners to very advanced students encourages and guides them to expand their creativity. Students work during this studio time to complete their art at their own pace and style. We will work from a variety of still life: taxidermied animals, photos, nature (outdoors if weather permits), and maybe something brought from home. Artists may visit many different media including pencil, charcoal, pastel and paints. Students are encouraged to sign up for one or both sessions. Remember to dress in old clothing.



*Created  
by Lena Shiffman, instructor*

## FAMILY & ADULT NATURE PROGRAMS

### SHINRIN-YOKU (FOREST THERAPY)

Thursdays, 11:00 AM to 12:00 PM, ages 12 through adult, \$5 per session

Guest Presenter: Debra Reed

Stressed from work or the start of a new year? Come experience what the Japanese have been doing for years; breathe, relax, smell, and listen to the forest around you. "Shinrin-Yoku" means "taking in the forest atmosphere" or "forest bathing," and is a cornerstone of preventative healthcare and healing in Japanese medicine. Join the 2017 Seasonal Park Naturalist Debra Reed on a tranquil, relaxing, guided walk through the forest and let go of the stress created by our urban lifestyles. Part of the program will involve sitting and experiencing nature; feel free to bring a camping chair if you are uncomfortable sitting on the ground (or indicate on your registration form that you would like to borrow one). Please note that no restroom facilities are available. Sign up for one or more sessions.

**Session A:** January 25: Laport Reserve, 216 Mountain Road, Ringoes 08551

**Session B:** February 22: Miquin Woods, 326 Newport Road, Glen Gardner 08826

**Session C:** March 22: Round Mountain, 100 Foothill Road, Flemington 08822

**Session D:** April 26: Musconetcong Gorge, 182 Dennis Road, Bloomsbury 08804

**Session E:** May 24: Wescott Preserve, 70 Raven Rock – Rosemont Road, Stockton 08559



### BUILD A NUTHATCH BOX WORKSHOP

Thursday, February 8, 7:00 PM to 8:30 PM, Echo Hill, ages 8 through adult, \$15 per box (one box per family) With their nasal "ank ank" and being the only bird able to walk down a tree, Nuthatches are one of the most enjoyable backyard birds. During this program, we will learn a little bit about our Nuthatches and their breeding behavior. We will then assemble boxes together. Wood will be pre-cut and screws will be provided. Please bring your own Phillips screwdrivers.



### LOVE IN NATURE

Thursday, February 15, 7:00 PM to 8:00 PM, Echo Hill Lodge, ages 10 through adult, \$3

Male house wrens construct "dummy nests" of a few sticks in several different locations, and bring the female around on a "house-hunting" tour before she decides on the perfect spot for her nest. Male nursery web spiders present a parcel of food wrapped in silk as a gift for their chosen female. Male bowerbirds build a "bower" of sticks and decorate it with blue objects, and then dance for the females. In honor of Valentine's Day, enjoy a slide show of various courtship rituals in nature around the world.

### GREAT BACKYARD BIRD COUNT

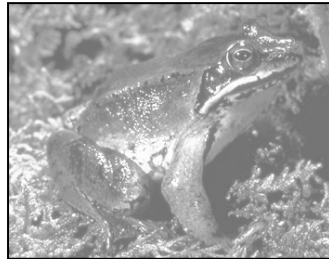
Saturday, February 17, 10:00 AM to 11:30 AM, Arboretum, ages 8 through adult, \$3

Jointly sponsored by the Cornell Lab of Ornithology and the National Audubon Society, the Great Backyard Bird Count (GBBC) is an annual event that engages bird watchers to create a real-time snapshot of where birds are across the continent. Join Park Naturalist Laura Bush to view a short PowerPoint on the GBBC, and go over some bird identification tips. Then we will take a bird walk around the property to see what species are out there and how many of each. This data will be submitted to the GBBC to aid in citizen science research. For bird watchers of any ability.

### SPRING EQUINOX HIKE

Tuesday, March 20, 6:00 PM to 7:00 PM, Arboretum, all ages, \$3

The word "equinox" comes from the Latin *aequus*, which means "equal," and *nox*, which means "night." It is the two days of the year where we have 12 hours of light and 12 hours of darkness. The Spring Equinox means that longer days are ahead, and is also the first day of spring. Join Senior Park Naturalist Laura Bush for a walk just before sunset to see what is happening in nature during this transition from winter to spring.



### EVENING WALK IN THE SOURLANDS

Friday, March 23, 8:30 PM to 10:00 PM, Sourlands Nature Preserve, ages 12 through adult, \$3

Spring has recently begun; join Chief Park Naturalist Tom Sheppard for this evening walk at Sourlands to find out what might be active. While nothing is guaranteed, we will walk through the woods listening for calls and looking for activity from our nocturnal wildlife. Possible sound encounters include wood frogs, Southern Flying Squirrels and Eastern Screech Owls.

### WILD & WOOLLY NATURAL DYES

Saturday, March 24, 9:00 AM to 11:00 AM, Teetertown Preserve, ages 10 through adult, \$10

How do we get such vibrant colors in clothing? Most of the dyes used today are synthetic and mineral dyes, but years ago people used plants and animals for dyeing. We will begin our program with a little history of the dye industry and a walk around the park in search of dye plants. Then we will make some natural dyes and try it out on some wool yarn! Participants will take home a sample of the dyed yarn.



## More FAMILY & ADULT NATURE PROGRAMS

### EAGLE NEST WATCH

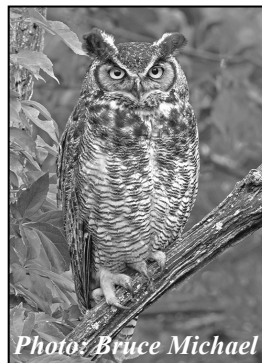
Saturday, March 24, 1:30 PM to 2:30 PM, South Branch Wildlife Management Area, ages 8 through adult, \$3  
Guest presenter: Dan Kroon, NJ Bald Eagle Project.  
Check out our Bald Eagle pair nesting near County parkland in the Three Bridges area! Dan Kroon, a volunteer with the NJ Bald Eagle Project, has been monitoring this nest and its residents for about three years now. He will teach us about the life history of our national bird, and about the program he supports. By this time, the eagles should be incubating eggs, so we will expect to see one of the parents on the nest, and perhaps the other nearby. We will be using binoculars and a spotting scope to view the birds; bring your own if desired but they will also be available to borrow. Meet at South Branch Wildlife Management Area, 442 Three Bridges Road, Flemington (the parking lot is just over the border into Somerset County).

### LOCAL WILDLIFE THROUGH A PHOTOGRAPHER'S EYE

Monday, April 9, 7:00 PM to 8:00 PM, Echo Hill Lodge, ages 8 through adult, \$3

Guest Presenter: Bruce Michael

Be prepared to be entertained for the evening with stunning photographs of our native wildlife. Bruce Michael is a local hiker and wildlife enthusiast who has volunteered to share his photographs with us as he tells us some interesting facts about each species. He has many pictures of birds, bugs, and snakes. He will also share some basic information about photographing wildlife, and can answer more technical questions as requested.



### BIRD STUDY SCOUTING MERIT BADGE

Friday, May 25, 4:00 PM to 6:00 PM, Echo Hill, Boy Scouts or Venture Scouts ages 11 through 17, \$10  
Earn your Bird Study Merit Badge with Counselor Laura Bush! The majority of the two hours will be spent on preparing our field notebooks, and identifying birds by sight and sound (requirements 5 and 6). We will also go over how to use binoculars and field guides (requirements 3 and 4, but scouts will have to be tested on this at a later date). Please bring a notebook and pencil, and binoculars if you have them (also available to borrow). Scouts will need to schedule an additional meeting time with Laura after they have completed the additional requirements for the badge on their own. Cost is per scout; adults may accompany their scout for free, or drop them off.

### JUPITER AT OPPOSITION & METEORS

Friday, May 11, 10:00 PM to 11:30 PM, Hoffman Park, ages 12 through adult, \$3

Guest presenters: Wayne Petko and John Andrews.

In May, this giant planet will be at its closest approach to Earth and its face will be fully illuminated by the Sun. It will be brighter than at any other time of the year and will be visible all night long. This is the best time to view Jupiter and its moons. We will see some of the details in Jupiter's cloud bands and its four largest moons, appearing as bright dots on either side of the planet. Plus, the Eta Aquarids, an above average meteor shower, will be occurring and the dark sky will offer a great chance to view the meteors and the constellations.



### FULL MOON HIKE

Tuesday, May 29, 8:30 PM to 9:30 PM, Hoffman Park, ages 8 through adult, \$3

Come explore the park during the night and see the moonlight reflecting off our pond! Under the light of a full moon, we will listen to spring insects and learn about the adaptations of nocturnal animals, and the phases of the moon. Meet Senior Park Naturalist Laura Bush at the main parking area, 26 Baptist Church Road, Hampton.

### MOTH NIGHT

Friday, June 1, 9:00 PM to 11:00 PM, Echo Hill, ages 10 through adult, \$20

Guest presenter: Blaine Rothauser of BR Environmental  
There are over 110,000 species of moths worldwide, and about 2,800 in New Jersey. Naturalist, photographer, and conservation biologist Blaine Rothauser will bring several high intensity metal halide lights that will attract a myriad of species for us to view, identify, and photograph if desired. We may see pastel-colored emeralds, delicate plume moths, and fuzzy dot-lined white moths. Who knows, maybe even New Jersey's largest moth, the lime-green Luna Moth, may show up at our party. We may also see other nocturnal insects like leafhoppers, crane flies, mayflies, and the outer-space looking mantisfly. Moths are very sensitive to environmental degradation, so the species diversity will tell us something about the habitats and health of the ecosystem at Echo Hill. The program will begin at 9:00 PM; participants can stay for up to two hours. Feel free to bring a snack and non-alcoholic beverage. Please register by May 24<sup>th</sup>.



### FIREFLY HUNT

Friday, June 8, 8:00 to 9:00 PM, Echo Hill, all ages, \$3

As dusk settles, watch the sparkling lights of fireflies appear as we learn how and why they light up. We will take to the fields with nets and jars to catch some to study up-close. We may also see or hear other nocturnal insects.

## CHILDREN'S WEEKDAY NATURE PROGRAMS

### SPRING BREAK CAMP

Wednesday, April 4 or

Thursday, April 5

9:00 AM to 3:30 PM

Echo Hill playground

\$25 per child (drop-off program)

**Session A:** Grades 3-5, April 4

**Session B:** Grades K-2, April 4

**Session C:** Grades K-2, April 5

**Session D:** Grades K-2, April 5



Do you miss camp? Never been but want to try it out for a day? Join the naturalist staff for a day of summer nature camp fun over spring break! We will revisit traditional camp favorites such as catching insects, shelter building, and s'mores. Please bring a lunch and a refillable water bottle. Please wear sturdy close-toed shoes and dress for the weather, as we will have camp rain or shine (or cold!). Please note: this year, we are offering two days during the same week. Curriculum will be the same both days, so **we ask that campers sign up for one day only.** There are two groups for grades K-2 on April 5, and we will split up campers by the order in which they sign up.

### TOT WALKS

Echo Hill, 2 to 3 with adult, each walk \$3 per child; accompanying adult attends for free

Join Senior Park Naturalist Laura Bush on these early adventures to discover nature at your local park! Leave the strollers behind as we take a walk outside to see plants and animals around us. We will use our senses to focus on each theme. Each one-hour program will include a walk and an indoor time of a story and craft.

### ANIMAL TRACKS

**A:** Thursday, February 22, 9:30 AM to 10:30 AM

**B:** Friday, February 23, 9:30 AM to 10:30 AM

### WORMS

**A:** Thursday, March 22, 9:30 AM to 10:30 AM

**B:** Friday, March 23, 9:30 AM to 10:30 AM

**C:** Friday, March 23, 11:00 AM to 12:00 PM

### TURTLES

**A:** Thursday, April 12, 9:30 AM to 10:30 AM

**B:** Friday, April 13, 9:30 AM to 10:30 AM

**C:** Friday, April 13, 11:00 AM to 12:00 PM

### SALAMANDERS

**A:** Thursday, May 24, 9:30 AM to 10:30 AM

**B:** Friday, May 25, 9:30 AM to 10:30 AM

**C:** Friday, May 25, 11:00 AM to 12:00 PM



### SPRING NATURE CLUBS FOR KIDS AGES 3 – 3rd GRADE

Our popular spring nature clubs will introduce your child to many exciting nature topics. A professional Park Naturalist will guide the children during hikes as they discover the diverse field, forest, and pond habitats at Echo Hill. Other hands-on activities include science experiments, field games, and take-home craft projects. The children will be able to observe the subtle changes from week to week as we progress through the season. Through our explorations, children will also hone their attention to detail as we observe the colors, shapes, textures, and sounds of the natural world.

**This year we are offering Sessions A and B for ages 3 to 5 and Session C for kindergarten through third graders. This is a drop-off program and children must be self-sufficient in the bathroom.**

Please be sure to dress your child for the outdoors so that the whole group will be able to enjoy our lessons fully. We strongly recommend old clothes and sneakers/boots that can get dirty. Nature Clubs meet rain or shine. In inclement weather, we shorten our outdoor adventures in order to spend more time inside.

### IMPORTANT REGISTRATION INFORMATION:

For each child, a registration form must be completed and signed by a parent or guardian. Included on the form are the date of last tetanus shot, known allergies, and special care notes; please have this information ready. Each session is limited to ten children to ensure a quality experience for the participants. The Division of Parks and Recreation reserves the right to cancel any session due to low enrollment, and give a full refund.

Eight Tuesdays, April 3 to May 22, Echo Hill, \$90

**Session A:** 9:30 AM to 11:00 AM, 3 to 5 years

**Session B:** 1:00 PM to 2:30 PM, 3 to 5 years

**Session C:** 4:00 PM to 5:30 PM, kindergarten through 3<sup>rd</sup> graders



## BIRDING TRIPS

Bird trips are led by Tom Sheppard, Chief Park Naturalist. Tom and his colleagues focus on helping all participants learn about the birds, and teach them about interesting characteristics of each species. They will also point out other natural history information about the locations. Please pack a lunch, as stops are not guaranteed. If you have your own binoculars or spotting scope, please bring them. Binoculars are also available for loan. Trips are designed for adults, but mature youths under 18 can contact Tom for approval. Please dress appropriately for the weather. Transport is by County Park vans. All trips leave from and return to the County Arboretum. Trips are recommended for any birder at all levels of ability, unless otherwise stated.

### CHASE FOR WINTER SURPRISES

Sunday, February 11, 7:00 AM to 5:00 PM, \$25

This time of year some surprising birds can be reported in our region. For example, last year there were reports of Pink-footed Goose, Bohemian Waxwings, Rough-legged Hawks, and some other species in the state. Based on birding reports as the date for the trip approaches, Tom will pick a target or two and we will go birding in that direction.



### WATERFOWL & WOODCOCK

Saturday, March 17, 1:00 PM to 8:30 PM, \$25

March is a time when ducks migrate through Hunterdon and Warren Counties, stopping to rest at places like the Assiscong Marsh, Spruce Run, Round Valley, and Merrill Creek. We will look for ducks and other water birds, as well as check on the eagles at Merrill Creek. We will end the day looking for woodcocks with the hope of observing their interesting courtship display.

### BELLEPLAIN & HEISLERVILLE

Saturday, April 14, 5:30 AM to 7:00 PM, \$30

Join us on a whirlwind tour as we hit two of the highlights of Cape May County, Belleplain State Park and Heislerville Wildlife Management Area. This all-day excursion will focus on looking for NJ southern specialties such as the Summer Tanager and Prothonotary Warbler.



### LANCASTER & YORK COUNTY EXPLORATION

6:30 AM on Saturday, May 19 to 4:30 PM on Sunday, May 20, \$115

Join us on an overnight excursion as we head west into Pennsylvania to explore locations along both sides of the Susquehanna River Valley in Lancaster and York Counties. The Susquehanna River is the next major river corridor west of the Delaware River and we hope to catch some birds staying west of the Appalachians for the spring migration. So take a trip with us to the heartland of the Pennsylvania Dutch Country as we search for our spring migrants.

### NEWARK'S PEQUANNOCK WATERSHED

Saturday, June 9, 5:00 AM to 2:30 PM, \$25

This trip is a tour through the other side of Sussex County into Morris County. This trip offers many of the same species as the annual "Sussex Trip" but we will visit different locations. Stops will be made around the Walkill and Pequannock regions. Possible sightings could include Golden-winged Warbler, Cerulean Warbler, and Blackburnian Warbler, a variety of raptors, and other northern specialties. The timing is designed to get us in the area for early morning bird activities. (Participants can finish sleeping on the ride up.)

### BREEDING BIRDS OF HUNTERDON COUNTY

Sunday, July 8, 6:00 AM to 12:00 PM, \$20

Hunterdon has a rich variety of nesting birds. Last year we went through the western edge of the county. Prior to this trip, we will scout some of the best spots in the County, such as Hoffman Park, Spruce Run Reservoir, and Voorhees State Park. However, the route of the trip may change up to the last moment depending on reports and findings. We will hope to see Bobolinks, a variety of warblers, and more. Two miles of hiking required.

### MORNING/AFTERNOON BIRD WALKS

Adults, free, **please pre-register**

Take an early morning or evening stroll with the County Parks Division to look for spring migrants and local breeding birds of the county. We will use both eyes and ears to find birds, as well as to observe other signs of the spring season. This is a great chance to brush up on your song identification skills. Binoculars are available to borrow.

**Thursday Morning Walks:** 6:30 AM to 8:00 AM

April 5:	Assiscong Marsh
April 12:	Deer Path Park Soccer Lot
April 19:	County Arboretum
April 26:	Bernadette Morales/Uplands
May 3:	Echo Hill Park
May 10:	Sunnyside Picnic Area
May 17:	Deer Path Park Main Lot
May 24:	Hoffman Park

**Tuesday Afternoon Walks:** 5:30 PM to 7:00 PM

May 1:	Deer Path Park Main Lot
May 8:	Echo Hill Park
May 16:	County Arboretum
May 22:	Hoffman Park





## VOLUNTEERING

### TREE PLANTING

Saturday, May 19, 10:00 AM to 12:00 PM, Sunnyside Picnic Area (47 Kiceniuk Rd. Annandale, NJ 08801), all ages! (volunteers under age 14 must be accompanied by an adult), free!

Join your local Watershed Ambassador to plant over 100 native saplings in the Sunnyside Awossagame Grove! Running right alongside the beautiful South Branch of the Raritan River, this park is a crucial area for stream restoration. By planting trees, we will reduce water and air pollution, help stabilize the river banks, provide wildlife habitat, and protect the watershed. Volunteers will help plant the trees and install protective tree tubes. You may bring your own shovels and gloves, but tools will also be available. Light refreshments will be provided! Please contact Erica Rossetti at (908) 234-1852 ext. 323 or [americorps@raritanheadwaters.org](mailto:americorps@raritanheadwaters.org) for registration and more information.

### TRAILS DAY VOLUNTEER EVENT

Saturday, June 2, 8:00 AM to 12:30 PM, Leave from Arboretum, ages 14 through adults (children must be accompanied by adult), free!

The South Branch of the Raritan River is Hunterdon's most scenic water trail. Canoe down the river as our guides lead us to take care of our water trail. We will focus on removing all the litter and debris that we are able to get out of the water. We may conduct some minor handsaw and clipping work to make openings or to widen some passages. A safety talk and canoe lesson will be given before departing for the assigned locations on the river. Volunteers will enjoy a light breakfast and a full lunch, thanks to generous sponsors. We will gather in the Arboretum, and participants may leave a change of clothes there for after the event if desired.



### PUBLIC LANDS DAY

Saturday, September 22, 8:30 AM to 12:30 PM, meet at Arboretum, ages 12 through adults (children must be accompanied by adult), free!

We are opening new trails in the Furnas Section of the Arboretum. Eagle scouts have been working on getting these trails started. With volunteers, we can get this trail completed and open. We will meet at the Arboretum, have a light breakfast, and carpool to Furnas, returning for lunch after the work is done. The grand plan is to connect Echo Hill, the Arboretum, and the Furnas Section into one long trail over the three parks.

### SUMMER NATURE PROGRAM COUNSELORS-IN-TRAINING (CITs)

A volunteer opportunity for teens entering 10<sup>th</sup>, 11<sup>th</sup>, and 12<sup>th</sup> grades. Counselors-in-Training (CITs) will be selected for each of our two Summer Nature Program sites (Echo Hill and Teetertown). Have fun outdoors while building your résumé. CITs are required to attend an evening training session on Thursday, May 31<sup>st</sup> from 6:00 PM to 9:00 PM at the County Arboretum. Must be able to commit to a minimum of two weeks during the camp season. To apply: submit an Individual Volunteer Application with a letter of recommendation from a teacher or employer. Applications are available at the Arboretum or on our website [www.co.hunterdon.nj.us](http://www.co.hunterdon.nj.us) (click on "Volunteer Opportunities").

### COUNSELORS-IN-TRAINING (CITs) for RECREATION CAMPS

This is a volunteer opportunity for teens entering 9<sup>th</sup> through 12<sup>th</sup> grades. Counselors-in-Training (CITs) will be selected for Performance Camp, Craft Camp, Art Camp, and Scienstational Camps. Teens will assist counselors in many aspects of running camp. This is a great opportunity for on-the-job experience and a boost for your résumé. There will be a mandatory CIT training on Monday, June 11, 6:00 PM to 9:30 PM at the Arboretum. To apply: submit an Individual Volunteer Application with an attached recommendation from a teacher or employer. Applications are available at the Arboretum or on our website [www.co.hunterdon.nj.us](http://www.co.hunterdon.nj.us) (click on "Volunteer Opportunities"). Contact: Liz Fulmer, [lfulmer@co.hunterdon.nj.us](mailto:lfulmer@co.hunterdon.nj.us) or (908) 782-1158.

### THANK YOU TO 2017 VOLUNTEERS

The Hunterdon County Division of Parks and Recreation wishes to extend a great big thank you to all of our 2017 volunteers! You helped the following programs run smoothly: Maple Sugaring, Spring Break Camp, Earth Day, Spring Volunteer Day, Summer Nature Program, Performance Camp, Craft Camp, Art Camp, Scienstational Camps, LEGO Camps, Public Lands Day, Touch-a-Truck, Basket/Craft Programs, Bluebird House Monitoring, Nature Club, Public Programs, Adopt-a-Trail, Concerts, 4-H Fair, scout projects, and site improvements. We couldn't have done it without you! To find out how to volunteer with the Parks, please visit: <http://www.co.hunterdon.nj.us/depts/parks/volunteeropps.htm>.



**SUMMER EMPLOYMENT****TO APPLY...**

Send a cover letter and completed County Employment Application ([www.co.hunterdon.nj.us](http://www.co.hunterdon.nj.us)) to: Hunterdon County Division of Human Resources, P.O. Box 2900, Flemington, NJ 08822. For information call (908) 782-1158 or [parks@co.hunterdon.nj.us](mailto:parks@co.hunterdon.nj.us).

~ **Must be a New Jersey resident.**

~ **Mandatory drug testing and physical will be given.**

**SEASONAL PARK NATURALIST (1)**

This position will be based at the County Arboretum and will involve working with the summer camp programs at Teetertown or Echo Hill, and possibly other program sites. The Seasonal Park Naturalist will work a flexible 5-day schedule, including some weekend/evening work. For a list of qualifications and responsibilities visit [www.co.hunterdon.nj.us/personnel/jobs.htm](http://www.co.hunterdon.nj.us/personnel/jobs.htm). Dates: April 2 through September 28. Salary: \$12/hr; some overtime. Filing deadline: February 13. Contact: Tom Sheppard, [tsheppard@co.hunterdon.nj.us](mailto:tsheppard@co.hunterdon.nj.us) or (908) 782-1158.

**SUMMER INTERNS**

May 29 to August 26. 40 hours/week. \$11/hr. Must hold NJ driver's license.

**CANOE & CONCERTS REC INTERN (1):** canoeing, Golf & Bowling Sports Camp, concerts, program ideas.

Patrick Eckard: [peckard@co.hunterdon.nj.us](mailto:peckard@co.hunterdon.nj.us).

**ARTS & CRAFTS REC INTERN (1):** events, trips, summer camps, training, arts & crafts, editing newsletter.

Liz Fulmer: [lfulmer@co.hunterdon.nj.us](mailto:lfulmer@co.hunterdon.nj.us).

**SUMMER NATURE INTERN (1):** support Summer Nature Program, public programs, updating nature literature. Tom Sheppard, [tsheppard@co.hunterdon.nj.us](mailto:tsheppard@co.hunterdon.nj.us).

**WEEKEND CANOE INSTRUCTORS**

Primary responsibility is leading river trips for adults and children on weekends. Canoeing experience on moving water is encouraged and a valid NJ driver's license required. Preference will be given to candidates with formal training or American Canoe Association certification. Dates: April to October as needed. Salary: \$12/hr. Contact: Patrick Eckard, [peckard@co.hunterdon.nj.us](mailto:peckard@co.hunterdon.nj.us) or (908) 782-1158.

**SCA COMMUNITY CREW MEMBER**

July to August, students at least 15 years old or in high school

**Note: This is a position with the Student Conservation Association (SCA), not Hunterdon County.**

A 6-week summer program, Monday to Friday. Participants build trails and restore habitat while exploring green career opportunities, building leadership skills, and learning about the local environment through field trips, outdoor recreation, and service projects. Members will earn an hourly wage and get community service hours for their participation. Contact: [SCANJ@SCA.org](mailto:SCANJ@SCA.org) or <http://thesca.org/serve/program/new-jersey>.

**SUMMER NATURE PROGRAM POSITIONS**

Do you enjoy the outdoors and like working with kids? Do you want to share your outdoor knowledge with others? Our Summer Nature Program (SNP) might be the perfect summer job for you. First Aid and CPR certification is required and training will be given during orientation. Filing deadline: April 1, but candidates are strongly encouraged to apply earlier. Contact: Tom Sheppard, [tsheppard@co.hunterdon.nj.us](mailto:tsheppard@co.hunterdon.nj.us) or (908) 782-1158 for the following:

**SUMMER NATURE PROGRAM LEADERS (9)**

Monday through Friday work week. Some positions require canoeing and 4 overnight campouts. Successful applicants for leader positions must have some college courses in environmental science, biology, or similar; education majors will also be considered. Experience working with children required, preferably in an outdoor setting. Primary responsibilities include planning and leading children's nature programs. Dates: June 13 through August 17. Salary: \$11/hr.; some positions have overtime pay.

**ENVIRONMENTAL CAMP LEADER (1)**

Monday through Friday work week with some long days and overnights required. This dual-position involves hosting two sessions of Environmental Camp with campers in grades 9 and 10 and two sessions of Junior Explorers with campers in grades 5 and 6. Experience working with adolescents in an outdoor setting and proven skills in the areas of backpacking and camping. College coursework in environmental science, biology, or similar preferred. Leader will work under close supervision of the Chief Park Naturalist to plan and facilitate on-site activities, field trips, and overnights. Dates: June 13 through Aug. 17. Salary: \$11/hr. plus overtime pay.

**SNP ASSISTANT LEADERS (6)**

For ages 16 or older. Monday through Friday work week. Successful applicants will have experience working with children. Primary responsibilities include providing supervision during camp activities and assisting leaders as needed. Mandatory pre-season training session June 7, 6:00 PM to 9:00 PM. Dates: June 25 through August 17. Salary: \$8.48/hr.

**SNP CANOE INSTRUCTORS (2)**

Primary responsibilities include planning and facilitating flat water paddling clinics and leading river day trips for campers in grades 5 through 8, and two overnights for the Environmental Camp (grades 9 and 10). Canoeing experience on moving water is encouraged and valid driver's license required. Preference will be given to candidates with formal training or American Canoe Association certification. Variable schedule includes some long days and two Fridays off. Weekend work opportunities may also be available. Dates: June to August 17. Salary: \$12/hr. Contact: Patrick Eckard, [peckard@co.hunterdon.nj.us](mailto:peckard@co.hunterdon.nj.us) or (908) 782-1158.

**Pre-registration required & children must be accompanied by an adult, unless otherwise noted**

## GROUP NATURE & RECREATION PROGRAMS

Let us do a program for your group! Unless otherwise noted, cost is \$30 on-site, \$50 off-site, \$75 out-of-county (limited range).

### NATURE PROGRAMS

**SEASONAL NATURE WALK**, *All ages*, 1 hr, \$20, 25 max  
**ANIMAL CLUES**, *Grade K+*, 1 hr, 25 max  
**AMAZING ADAPTATIONS**, *Grade K+*, 1-1.5 hrs, 25 max  
**INCREDIBLE INSECTS**, *Grade 1+*, 1-1.5 hrs, 25 max  
**PLANT STUDY**, *Grade 1+*, 1-1.5 hrs, 25 max  
**BIRDING**, *Grade 3+*, 1-1.5 hrs, 25 max  
**POND/STREAM STUDY**, *Grade 1+*, 1-1.5 hrs, 25 max  
**ANIMAL STRATEGIES**, *All Ages*, 1 hr, 25 max  
**REPTILES ALIVE!**, *All Ages*, 1 hr, 25 max  
**ROCKS AND MINERALS**, *Grade 3+*, 1 hr, 20 max  
**INTRODUCTION TO BIRDING**, *Grade 3+*, 1 hr, 25 max  
**SKULL WORKSHOP**, *Grade 2+*, 1 hr, 25 max  
**SCAT & TRACKS WORKSHOP**, *Grade 3+*, 1 hr, 25 max  
**WINGS & FEATHERS WORKSHOP**, *Grade 3+*, 1 hr, 25 max  
**NESTS & EGGS**, *Grade K+*, 1 hr, 25 max  
**MAPLE SUGAR TO GO**, *All ages*, 1 hr, 25 max, \$50 (off-site)  
**PHYSICS IN NATURE**, *Grade 3+*, 1-1.5 hrs, 25 max  
**RECYCLING**, *Grade 1+*, 1 hr, 25 max  
**WATER ISSUES**, *Grade 1+*, 1 hr, 25 max  
**COMPOSTING FOR THE HOME**, *Grade 3+*, 1 hr, 25 max



### LECTURES

**BATTY ABOUT BATS**, *Grade 3+*, 1 hr  
**BIRDS OF HUNTERDON**, *Grade 3+*, 1 hr  
**BUTTERFLIES & MOTHS**, *Grade 3+*, 1 hr  
**CO-EXISTING WITH COYOTES**, *Grade 3+*, 1 hr  
**HERPTILES OF HUNTERDON**, *Grade 3+*, 1 hr  
**MAMMALS OF HUNTERDON**, *Grade 3+*, 1 hr  
**MUSHROOMS & MOLDS**, *Grade 3+*, 1 hr  
**NJ BLACK BEAR**, *Grade 3+*, 1 hr  
**OWLS OF HUNTERDON**, *Grade 3+*, 1 hr  
**PLANETS OF THE INNER SOLAR SYSTEM**, *Grade 3+*, 1 hr  
**PLANETS OF THE OUTER SOLAR SYSTEM**, *Grade 3+*, 1 hr  
**RAPTORS OF HUNTERDON**, *Grade 3+*, 1 hr  
**TREES OF HUNTERDON**, *Grade 3+*, 1 hr  
**WATERFOWL OF HUNTERDON**, *Grade 3+*, 1 hr  
**WILDFLOWER FOLKLORE**, *Grade 3+*, 1 hr  
**WILDLIFE OF HUNTERDON**, *Grade 3+*, 1 hr  
**WOODPECKERS OF HUNTERDON**, *Grade 3+*, 1 hr  
**ATTRACTING BIRDS TO YOUR YARD**, *Adults*, 1 hr  
**HUNTERDON PARKS & RECREATION**, *Adults*, 1 hr, free

### RECREATION PROGRAMS

**EMERGENCY PREPAREDNESS**, *Grade 3+*, 1.5-2 hrs, 10 max  
**CPR CERTIFICATION**, *Grade 7+*, 4 hrs, 4-6 participants  
**FIRST AID CERTIFICATION**, *Grade 7+*, 3 hrs, 4-6 participants  
**ORIENTEERING**, *Grade 4+*, 1.5-2 hrs, 15 max  
**GEOCACHING 101**, *Grade 4+*, 1.5-2 hrs, 15 max  
**HIKING KNOWLEDGE**, *Grade 2+*, 1.5 hrs, 15 max  
**BACKPACKING KNOWLEDGE**, *Grade 5+*, 1.5-2 hrs, 15 max  
**CAMPING KNOWLEDGE**, *Grade 4+*, 1.5-2 hrs, 15 max  
**KNIFE SAFETY**, *Grade 3+*, 1.5-2 hrs, \$30 + materials fee, 8 max  
**CAMP TOOLS**, *Grade 3+*, 1.5-2 hrs, 10 max  
**KNOT TYING**, *Grade 2+*, 1.5-2 hrs, 10 max  
**FIRE BUILDING**, *Grade 4+*, 1.5-2 hrs, 10 max  
**OUTDOOR SURVIVAL**, *Grade 4+*, 1.5-2 hrs, 15 max  
**CANOE CLINIC**, *Grade 5+*, 1.5-2 hrs, \$175, 16 max  
**FISHING CLINIC**, *Grade 1+*, 1.5-2 hrs, \$30 + \$2/person, 15 max  
**BIKE SAFETY**, *Grade 3+*, 1.5-2 hrs, 15 max  
**INITIATIVES/ TEAM BUILDING**, *Grade 4+*, 1.5-2 hrs, 15 max  
**EARTH-INSPIRED CRAFTS**, *Grade K+*, 1-2 hrs, \$30 + materials fee, 10 max  
**CLAY WORKSHOPS**, *Grade K+*, 1.5-2 hrs, \$30 + \$4/person materials, 10 max  
**JEWELRY WORKSHOPS**, *Grade 3+*, 1.5-2.5 hrs, \$30 + materials fee, 10 max  
**WOODWORKING WORKSHOPS**, *Grade 2+*, 2-2.5 hrs, \$30 + materials fee, 8-10 max  
**SIMPLE BASKET**, *Grade K+*, 2 hrs, \$30 + \$3/person materials, 10 max. Other basketry workshops also available.

*For program descriptions, including specific craft options, see our Group Programs brochure on our website or pick one up at the Arboretum. Call us to register. We also tailor programs to scouts and homeschool groups.*



**Pre-registration required & children must be accompanied by an adult, unless otherwise noted**

## VISITOR SERVICES STAFF



name / email      left to right

Liz Fulmer / lfulmer@co.hunterdon.nj.us

Patrick Eckard / peckard@co.hunterdon.nj.us

Tom Sheppard / tsheppard@co.hunterdon.nj.us

Laura Kroon Bush / lkroon@co.hunterdon.nj.us

## AFFILIATED ORGANIZATIONS

**ARC OF HUNTERDON COUNTY** archhunterdon.org

**DELAWARE VALLEY DIVISION OF AMERICAN  
CANOE ASSOCIATION** dvdaca.org

**HUNTERDON COUNTY CANOE CLUB**  
hunterdoncountycanoeclub.org

**HUNTERDON FLUTTERWHEELS SQUARE DANCE  
CLUB** hunterdonflutterwheels.nnjsda.org

**HUNTERDON HIKING CLUB** hunterdonhikingclub.org

**NJ BEEKEEPERS ASSOCIATION** nwba.njbeekeepers.org

**READINGTON TRAIL ASSOCIATION** readingtontrail.org

**TRAVIS MANION BATTALION, US SEA CADET CORPS  
OF HUNTERDON COUNTY** travismanionbattalion.org



## THE COURSE YOU'LL CALL HOME

Heron Glen Golf Course is one of New Jersey's finest public golf facilities. The course offers 18 holes of championship golf, a practice facility, golf associations, leagues, lessons, clinics, and juniors camps for all skill levels.

We are happy to announce the Grand Opening of our New Clubhouse in March 2018. The 6,600 square foot clubhouse is surrounded by stunning views and sunsets. The clubhouse will feature a full-service restaurant, a double-sided fireplace, patio dining, and a private room for events. We excitedly invite you to "The Course You'll Call Home."

## HUNTERDON COUNTY DIVISION OF PARKS & RECREATION

### OFFICE HOURS

Monday to Friday: 8:00 AM to 4:30 PM

Location: 1020 Route 31, Lebanon (Clinton Township)

**PHONE:** (908) 782-1158

**WEBSITE:** [www.co.hunterdon.nj.us](http://www.co.hunterdon.nj.us) ("Parks & Recreation")  
Like "Hunterdon County Parks" on Facebook

### MISSION STATEMENT

The Hunterdon County Division of Parks and Recreation is dedicated to preserving open space and natural resources, providing safe parks and facilities, and offering educational and recreational opportunities, all contributing to an enhanced quality of life for present and future generations.

### ACCOMMODATION STATEMENT

The Hunterdon County Division of Parks and Recreation welcomes all individuals to participate and enjoy our parks, facilities, and recreational programs. Reasonable accommodations, individual adaptations, and support will be provided for persons of all abilities to encourage everyone to benefit equally from their choice of leisure activities. Please notify us if you need special accommodations either at the time of registration or at least two weeks prior to program attendance or facility use. Each request will be assessed individually.

### RESERVABLE FACILITIES

**ECHO HILL:** Main Lodge, Multi-Purpose Room, & Group Camping Site

**ARBORETUM:** Two Gazebos & Meeting Room

**DEER PATH PARK:** Two Pavilions, Gazebo, & Softball Field

**TEETERTOWN PRESERVE:** Group & Public Camping Sites

**COURT STREET PARK:** Gazebo/Bandstand

**To reserve a facility, contact the park office.**

**For information and a map of each park, contact the office or download them from our website ([www.co.hunterdon.nj.us](http://www.co.hunterdon.nj.us)).**



## PROGRAM REGISTRATION INFORMATION

Fill out the form on the last page of this brochure. OR visit our website for a registration form.

Mail your completed registration form with payment to:

Hunterdon County Division of Parks & Recreation  
P.O. Box 2900, Flemington, NJ 08822-2900

OR... Drop off your form and payment at the Arboretum, 1020 State Highway 31 North, Lebanon, NJ 08833. After hours, there is a door slot for your convenience (**exact cash or check only**).

### CANCELLATION POLICIES:

If we cancel a program, you will be notified by phone and given the option of a credit or a full refund. Programs are designed for all types of weather and participants should dress appropriately. Cancellations by participants are subject to a 30% service charge. Cancellations must be in writing, and cancellations made less than one week prior to program will **NOT** receive a refund.

For more detailed program information, visit our website at: [www.co.hunterdon.nj.us](http://www.co.hunterdon.nj.us)  
(click on "Parks & Recreation").

Pre-registration required &amp; children must be accompanied by an adult, unless otherwise noted



## HUNTERDON COUNTY DIVISION OF PARKS AND RECREATION PROGRAM REGISTRATION FORM

Office Location: 1020 State Route 31, Lebanon  
Mailing Address: PO Box 2900, Flemington, New Jersey 08822-2900  
Phone: (908) 782-1158 \* Fax: (908) 806-4057



PARTICIPANT(S) \_\_\_\_\_

ADDRESS \_\_\_\_\_

PHONE (day) \_\_\_\_\_ (eve) \_\_\_\_\_ (cell) \_\_\_\_\_

EMAIL ADDRESS \_\_\_\_\_ ☐ CHECK TO BE ADDED TO OUR EMAIL LISTEMERGENCY CONTACT \_\_\_\_\_ PHONE (day) \_\_\_\_\_ (eve/cell) \_\_\_\_\_  
(other than parent or guardian)

PROGRAM: \_\_\_\_\_ DATE: \_\_\_\_\_ LOCATION: \_\_\_\_\_ TIME: \_\_\_\_\_ FEE: \_\_\_\_\_

PROGRAM: \_\_\_\_\_ DATE: \_\_\_\_\_ LOCATION: \_\_\_\_\_ TIME: \_\_\_\_\_ FEE: \_\_\_\_\_

PROGRAM: \_\_\_\_\_ DATE: \_\_\_\_\_ LOCATION: \_\_\_\_\_ TIME: \_\_\_\_\_ FEE: \_\_\_\_\_

PROGRAM: \_\_\_\_\_ DATE: \_\_\_\_\_ LOCATION: \_\_\_\_\_ TIME: \_\_\_\_\_ FEE: \_\_\_\_\_

PROGRAM: \_\_\_\_\_ DATE: \_\_\_\_\_ LOCATION: \_\_\_\_\_ TIME: \_\_\_\_\_ FEE: \_\_\_\_\_

TOTAL FEE \$ \_\_\_\_\_ Make check payable to "Hunterdon County Parks". Fees are used to offset the cost of the program.

***Requests for refunds must be made in writing and are subject to a 30% service charge. Cancellations made less than one week prior to program will NOT receive a refund.***

NOTES: \_\_\_\_\_

IF THE PARTICIPANT IS UNDER 18 PLEASE PROVIDE: NAME _____ AGE _____ GRADE _____			
DATE OF LAST TETANUS SHOT _____		NAME _____ AGE _____ GRADE _____	
NAME OF PARENT OR GUARDIAN (PLEASE PRINT): _____			

**IMPORTANT—PLEASE READ THE FOLLOWING STATEMENT:**

I hereby waive and release all rights and claims for damages against the County of Hunterdon and its employees and agents for all injuries, which may be sustained, by the herein named minor or myself while participating in the program listed above. I understand the content of the program and the risks of personal injury therein. I also give my permission for employees of the County and the Hunterdon Medical Center (or closest medical facility to the activity site) to admit me or my child for EMERGENCY medical treatment that would become necessary as a result of a medical emergency during this program. I also give permission to the County to make **noncommercial use of any activity photographs of my child or myself**. Any information provided will be treated with confidentiality and will allow the County to better serve individuals attending programs.

**ACCESSIBILITY STATEMENT:** It is the policy of the County to provide reasonable accommodations to persons with disabilities upon advance notice of need. Persons requiring accommodations should make request at least 2 weeks prior to program attendance.

***You may withhold this data, but you might not receive appropriate accommodations, without advance notice.***

DOES PARTICIPANT TAKE ANY MEDICATION(S) Yes \_\_\_\_\_ No \_\_\_\_\_ If so, what? \_\_\_\_\_

DOES PARTICIPANT HAVE ANY MEDICAL CONDITIONS OF WHICH THE STAFF SHOULD BE AWARE?

(Please Circle: Attention Deficit/Hyperactivity Disorder, Epilepsy, Diabetes, Asthma, Dietary Restrictions, Oppositional Defiant Disorder, etc.) Yes \_\_\_\_\_ No \_\_\_\_\_ Other \_\_\_\_\_

DOES PARTICIPANT REQUIRE ANY ACCOMMODATION FOR A DISABILITY? Yes \_\_\_\_\_ No \_\_\_\_\_

DOES PARTICIPANT HAVE ANY ALLERGIES? Yes \_\_\_\_\_ No \_\_\_\_\_ If so, please explain \_\_\_\_\_

DOES PARTICIPANT CARRY AN EpiPen? Yes \_\_\_\_\_ No \_\_\_\_\_

NOTES: \_\_\_\_\_

SIGNATURE OF PARTICIPANT(S) \_\_\_\_\_ DATE \_\_\_\_\_

(Parent/Guardian if under 18 yrs. of age)